

# \$0 - 25 Wheatland Crescent, Provost

MLS® #E4256286

**\$0**

0 Bedroom, 0.00 Bathroom,  
Industrial on 0.00 Acres

Provost, Provost, AB

\* Opportunity to Lease freestanding office/warehouse building totaling 12,000 sq.ft.± on 0.75 acres±. \* Main floor consists of 10,500 sq.ft.± warehouse space and 1,500 sq.ft.± of functional air-conditioned office space \* Bonus second floor office and lunchroom with kitchenette (1,500 sq.ft.±) included free of charge \* Great location with easy access to Highway 13 and Hwy 899. Less than an hour from Hardisty \* Drive through capability with 5 grade loading doors \* Wash bay with potential for Hotsy installation \* Heavy power and multiple sumps

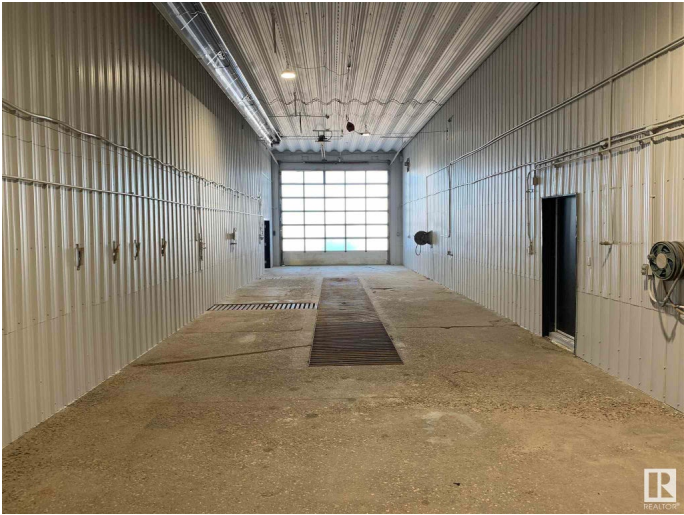
Built in 1987

## Essential Information

MLS® #	E4256286
Bathrooms	0.00
Acres	0.00
Year Built	1987
Type	Industrial
Status	Active

## Community Information

Address	25 Wheatland Crescent
Area	Provost
Subdivision	Provost
City	Provost



County	ALBERTA
Province	AB
Postal Code	T0B 3S0

### **Exterior**

Exterior	Mixed
Construction	Mixed

### **Additional Information**

Date Listed	July 27th, 2021
Days on Market	1485
Zoning	Zone 80

DATA IS DEEMED RELIABLE BUT IS NOT GUARANTEED ACCURATE BY THE REALTORS® ASSOCIATION OF EDMONTON. COPYRIGHT 2025 BY THE REALTORS® ASSOCIATION OF EDMONTON. ALL RIGHTS RESERVED. Trademarks are owned or controlled by the Canadian Real Estate Association (CREA) and identify real estate professionals who are members of CREA (REALTOR®, REALTORS®) and/or the quality of services they provide (MLS®, Multiple Listing Service®)

Listing information last updated on August 20th, 2025 at 11:32am MDT