

\$399,900 - 10314 Hwy 29, Rural St. Paul County

MLS® #E4331466

\$399,900

0 Bedroom, 0.00 Bathroom,
Land Commercial on 0.00 Acres

None, Rural St. Paul County, AB

Improved commercial land just 4 1/2 miles West of St. Paul- This property is presently zoned Agricultural and offers an abundance of possibilities with it's great highway exposure and room to develop for whatever your needs might be. The property has older structures, a drilled well, septic system, power and gas. What could you do with 11.73 acres? The options are many!

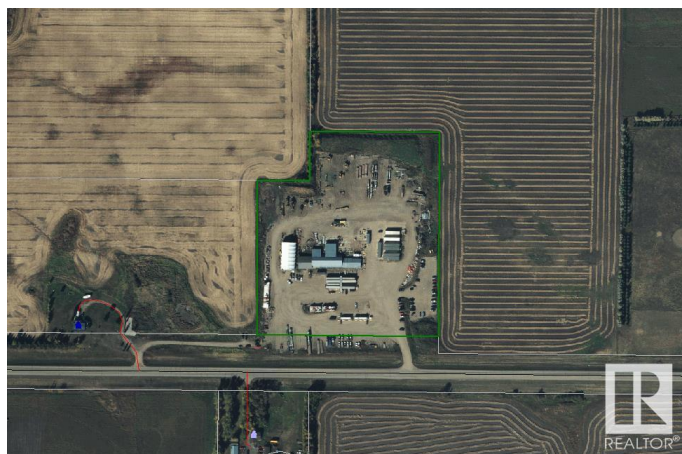
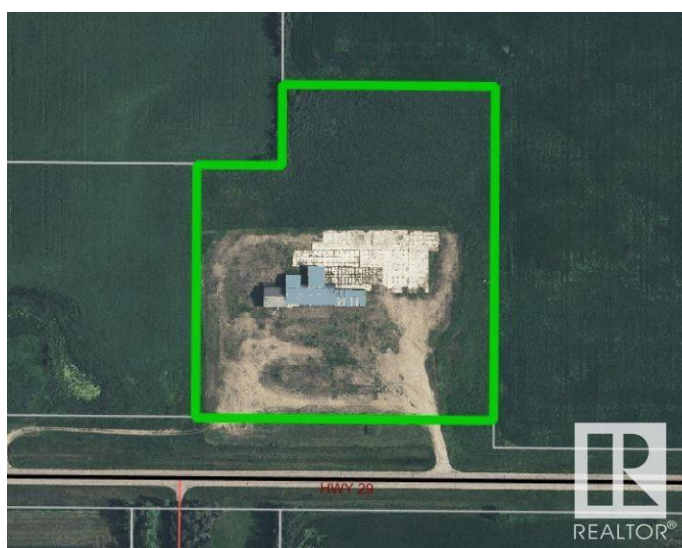
Built in 1968

Essential Information

MLS® #	E4331466
Price	\$399,900
Bathrooms	0.00
Acres	0.00
Year Built	1968
Type	Land Commercial
Status	Active

Community Information

Address	10314 Hwy 29
Area	Rural St. Paul County
Subdivision	None
City	Rural St. Paul County
County	ALBERTA
Province	AB
Postal Code	T0A 3A0



Exterior

Exterior	Mixed
Construction	Mixed

Additional Information

Date Listed	March 16th, 2023
Days on Market	870
Zoning	Zone 60

DATA IS DEEMED RELIABLE BUT IS NOT GUARANTEED ACCURATE BY THE REALTORS® ASSOCIATION OF EDMONTON. COPYRIGHT 2025 BY THE REALTORS® ASSOCIATION OF EDMONTON. ALL RIGHTS RESERVED.Trademarks are owned or controlled by the Canadian Real Estate Association (CREA) and identify real estate professionals who are members of CREA (REALTOR®, REALTORS®) and/or the quality of services they provide (MLS®, Multiple Listing Service®)

Listing information last updated on August 2nd, 2025 at 2:17pm MDT