

\$109,900 - 5516 45 Avenue, Wetaskiwin

MLS® #E4376207

\$109,900

0 Bedroom, 0.00 Bathroom,
Land Commercial on 0.00 Acres

West Central (Wetaskiwin), Wetaskiwin, AB

Located just off the auto-mile, prime
development land available! 1,746 M2, (.43
acre) - zoned C3 Some restrictions apply

Essential Information

MLS® #	E4376207
Price	\$109,900
Bathrooms	0.00
Acres	0.00
Type	Land Commercial
Status	Active

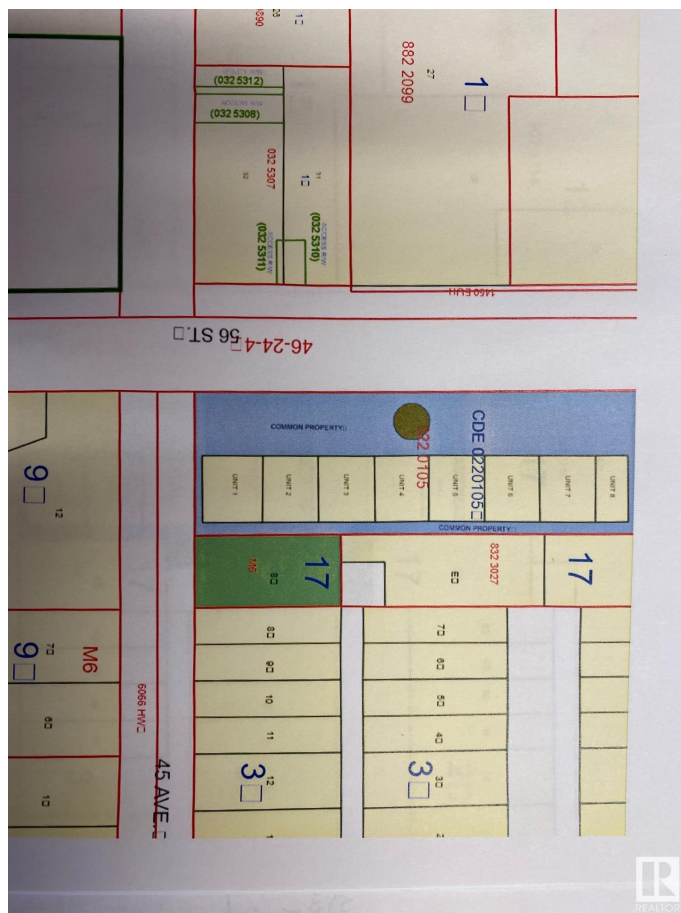
Community Information

Address	5516 45 Avenue
Area	Wetaskiwin
Subdivision	West Central (Wetaskiwin)
City	Wetaskiwin
County	ALBERTA
Province	AB
Postal Code	T9A 0G2

Additional Information

Date Listed	March 8th, 2024
Days on Market	418
Zoning	Zone 80

DATA IS DEEMED RELIABLE BUT IS NOT GUARANTEED ACCURATE BY THE REALTORS® ASSOCIATION OF EDMONTON. COPYRIGHT 2025 BY THE REALTORS® ASSOCIATION OF EDMONTON. ALL RIGHTS



RESERVED.Trademarks are owned or controlled by the Canadian Real Estate Association (CREA) and identify real estate professionals who are members of CREA (REALTOR®, REALTORS®) and/or the quality of services they provide (MLS®, Multiple Listing Service®)

Listing information last updated on April 30th, 2025 at 5:47pm MDT