

\$0 - 1101 16 Avenue, Nisku

MLS® #E4413632

\$0

0 Bedroom, 0.00 Bathroom,
Industrial on 0.00 Acres

Nisku, Nisku, AB

- 16,802 sq.ft.± office/warehouse available for lease on 1.2 acres± - Two 10 ton bridge cranes - Improved and fenced yard - 18â€™™x18â€™™ grade loading bays with make up air and sumps - Easy access to high load corridor, Highway 625, and QEII Highway

Built in 2010

Essential Information

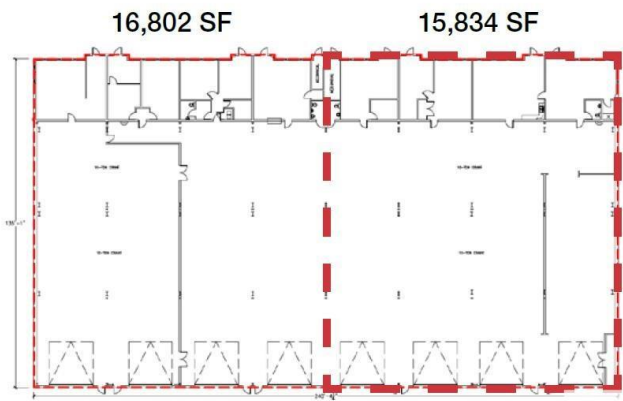
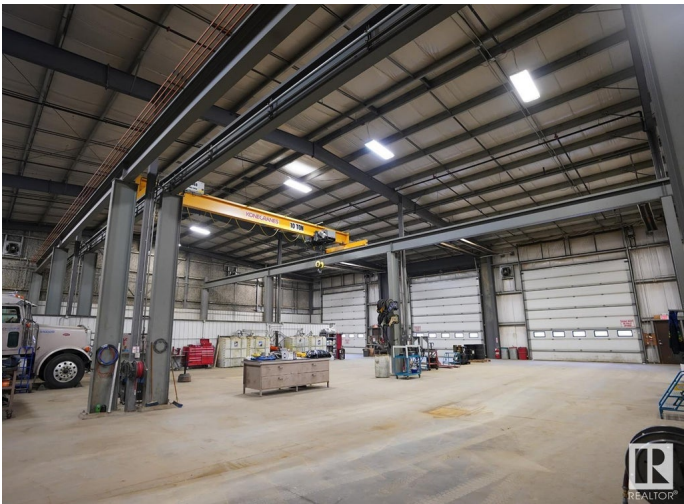
| | |
|------------|------------|
| MLS® # | E4413632 |
| Bathrooms | 0.00 |
| Acres | 0.00 |
| Year Built | 2010 |
| Type | Industrial |
| Status | Active |

Community Information

| | |
|-------------|----------------|
| Address | 1101 16 Avenue |
| Area | Nisku |
| Subdivision | Nisku |
| City | Nisku |
| County | ALBERTA |
| Province | AB |
| Postal Code | T9E 0A8 |

Exterior

| | |
|----------|-----------------|
| Exterior | Concrete, Mixed |
|----------|-----------------|



TOTAL: 32,636 SF±

Construction Concrete, Mixed

Additional Information

Date Listed November 14th, 2024

Days on Market 279

Zoning Zone 81

DATA IS DEEMED RELIABLE BUT IS NOT GUARANTEED ACCURATE BY THE REALTORS® ASSOCIATION OF EDMONTON. COPYRIGHT 2025 BY THE REALTORS® ASSOCIATION OF EDMONTON. ALL RIGHTS RESERVED.Trademarks are owned or controlled by the Canadian Real Estate Association (CREA) and identify real estate professionals who are members of CREA (REALTOR®, REALTORS®) and/or the quality of services they provide (MLS®, Multiple Listing Service®)

Listing information last updated on August 20th, 2025 at 11:32am MDT