

\$89,000 - 207 150 Bellerose Drive, St. Albert

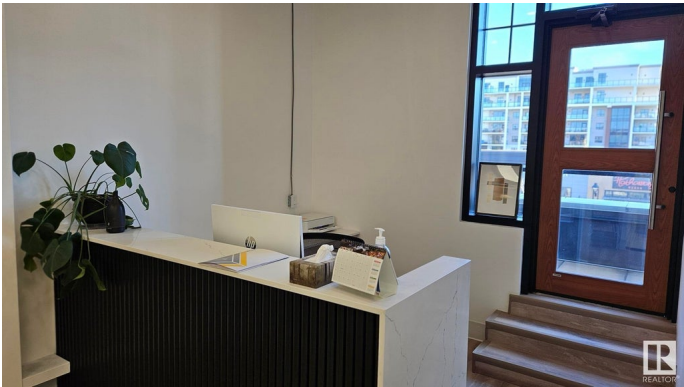
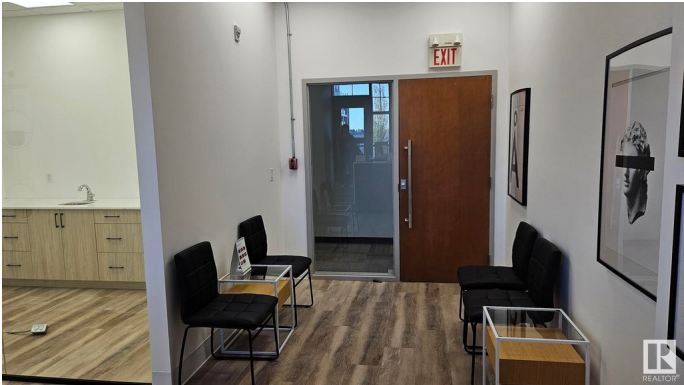
MLS® #E4414042

\$89,000

0 Bedroom, 0.00 Bathroom,
Business on 0.00 Acres

Oakmont, St. Albert, AB

A gem in the heart of St Albert, this modern, fully equipped medical facility is ready for you to take over and make your mark. The current business is a denture clinic however it can be converted to other medical usage such as hearing clinic, pulmonary testing lab, doctor clinic or even cosmetic clinic, beauty tattooing and a large array of possibilities. The spacious customers waiting area, a central reception, and three operatory rooms, all with quartz countertops, cupboards, and sinks. An all-inclusive lab and sterilization area meet your professional needs. The high open ceiling design floods the space with natural sunlight, creating a welcoming atmosphere. Elegant glass walls ensure privacy, and the durable commercial vinyl floors ensure easy maintenance. It has heated underground parking and located in a bustling plaza with high-end amenities, youâ€™re guaranteed ample foot traffic and visibility. Your business will stand out with our large signage.



Built in 2014

Essential Information

MLS® #	E4414042
Price	\$89,000
Bathrooms	0.00
Acres	0.00

Year Built	2014
Type	Business
Status	Active

Community Information

Address	207 150 Bellerose Drive
Area	St. Albert
Subdivision	Oakmont
City	St. Albert
County	ALBERTA
Province	AB
Postal Code	T8N 8N8

Additional Information

Date Listed	November 19th, 2024
Days on Market	163
Zoning	Zone 24

DATA IS DEEMED RELIABLE BUT IS NOT GUARANTEED ACCURATE BY THE REALTORS® ASSOCIATION OF EDMONTON. COPYRIGHT 2025 BY THE REALTORS® ASSOCIATION OF EDMONTON. ALL RIGHTS RESERVED. Trademarks are owned or controlled by the Canadian Real Estate Association (CREA) and identify real estate professionals who are members of CREA (REALTOR®, REALTORS®) and/or the quality of services they provide (MLS®, Multiple Listing Service®)

Listing information last updated on April 30th, 2025 at 10:02pm MDT