

\$269,900 - 314 9739 92 Street, Edmonton

MLS® #E4426182

\$269,900

2 Bedroom, 1.50 Bathroom, 947 sqft

Condo / Townhouse on 0.00 Acres

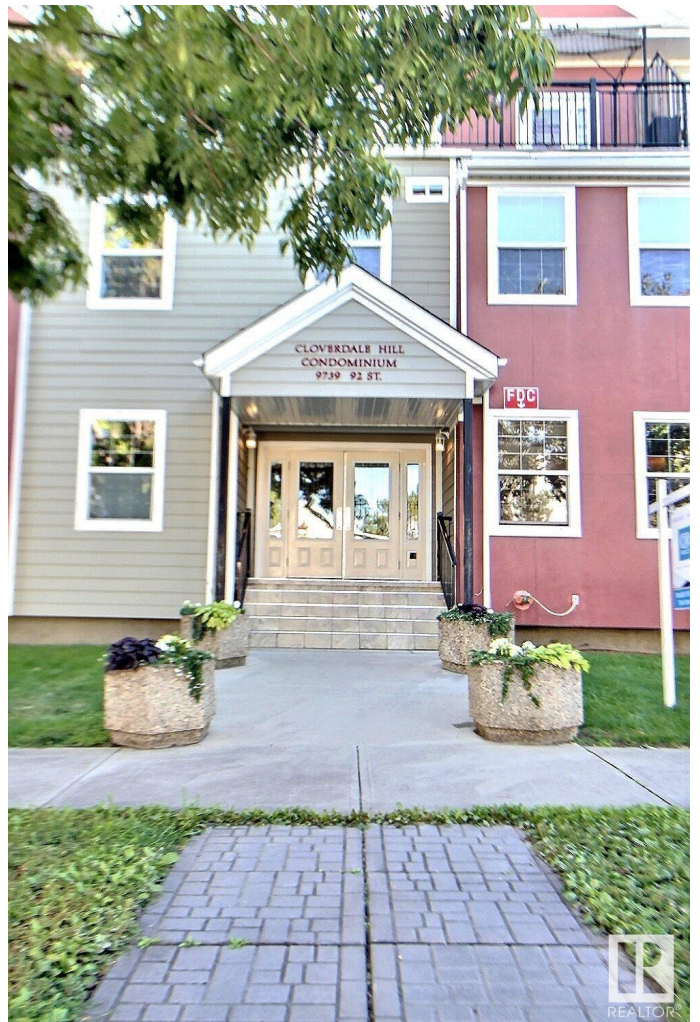
Cloverdale, Edmonton, AB

Located in the HEART of the RIVER VALLEY! This TOP FLOOR unit offers 2 bedroom, 1.5 baths &, 2 BALCONIES, AC, 9-foot ceilings, TITLED parking stall and storage cage. The open floor plan creates a beautiful space. Beautiful kitchen with loads of cabinet and counter space, pantry, BRAND NEW washer/dryer & newer dishwasher. Spacious Primary bedroom offers 2 large closets, ensuite with his and her vanity and garden door leading to balcony and storage room. Bedroom 2 offers walk in closet as well as a second closet and another balcony. Unit is complete with stacked washer/dryer & a convenient powder room. This incredible building is nestled nicely between Strathearn & Gallager Parks with all their walking/biking trails and beautiful views. PET FRIENDLY

Built in 2005

Essential Information

MLS® #	E4426182
Price	\$269,900
Bedrooms	2
Bathrooms	1.50
Full Baths	1
Half Baths	1
Square Footage	947
Acres	0.00



Year Built	2005
Type	Condo / Townhouse
Sub-Type	Lowrise Apartment
Style	Single Level Apartment
Status	Active

Community Information

Address	314 9739 92 Street
Area	Edmonton
Subdivision	Cloverdale
City	Edmonton
County	ALBERTA
Province	AB
Postal Code	T6C 3S3

Amenities

Amenities	On Street Parking, Air Conditioner, Deck, No Animal Home, No Smoking Home
Parking	Heated, Parkade, Underground

Interior

Interior Features	ensuite bathroom
Appliances	Dishwasher-Built-In, Microwave Hood Fan, Refrigerator, Stacked Washer/Dryer, Window Coverings
Heating	Hot Water, Natural Gas
# of Stories	4
Stories	1
Has Basement	Yes
Basement	None, No Basement

Exterior

Exterior	Wood, Vinyl
Exterior Features	Back Lane, Landscaped, Playground Nearby, Public Transportation, Schools
Roof	Asphalt Shingles
Construction	Wood, Vinyl
Foundation	Concrete Perimeter

Additional Information

Date Listed	March 18th, 2025
-------------	------------------

Days on Market 44
Zoning Zone 18
Condo Fee \$678



DATA IS DEEMED RELIABLE BUT IS NOT GUARANTEED ACCURATE BY THE REALTORS® ASSOCIATION OF EDMONTON. COPYRIGHT 2025 BY THE REALTORS® ASSOCIATION OF EDMONTON. ALL RIGHTS RESERVED. Trademarks are owned or controlled by the Canadian Real Estate Association (CREA) and identify real estate professionals who are members of CREA (REALTOR®, REALTORS®) and/or the quality of services they provide (MLS®, Multiple Listing Service®)
Listing information last updated on April 30th, 2025 at 11:17pm MDT