

# \$259,900 - 11505 84 Street, Edmonton

MLS® #E4427423

## \$259,900

1 Bedroom, 1.00 Bathroom, 743 sqft  
Single Family on 0.00 Acres

Parkdale (Edmonton), Edmonton, AB

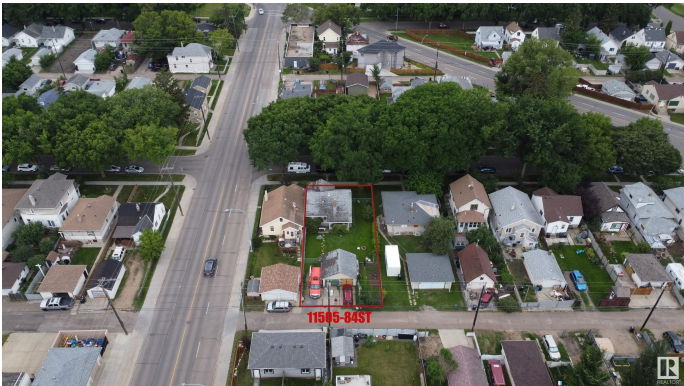
Location, location & this is the LOCATION! \*\*  
Heart of the city of Edmonton!! \*\* 9-minute  
walk to Stadium Station. \*\* Home is a  
surprisingly clean and well-maintained. Current  
rent \$1,200/month. \*\* LOT size: 545.34 m2;  
14.9m X 36.6m (49 feet X 120 feet). It is 50%  
wider than many others in this community. \*\*  
Den can be easily converted into an additional  
bedroom. \*\* Covered porch. \*\* Work/exercise  
space at basement. \*\* Home is what you make  
it!

Built in 1928

## Essential Information

MLS® #	E4427423
Price	\$259,900
Bedrooms	1
Bathrooms	1.00
Full Baths	1
Square Footage	743
Acres	0.00
Year Built	1928
Type	Single Family
Sub-Type	Detached Single Family
Style	Bungalow
Status	Active

## Community Information



Address	11505 84 Street
Area	Edmonton
Subdivision	Parkdale (Edmonton)
City	Edmonton
County	ALBERTA
Province	AB
Postal Code	T5B 3B6

### **Amenities**

Amenities	See Remarks
Parking	Double Garage Detached

### **Interior**

Appliances	Dishwasher-Built-In, Dryer, Refrigerator, Stove-Electric, Washer, Window Coverings, See Remarks
Heating	Forced Air-1, Natural Gas
Stories	1
Has Basement	Yes
Basement	Full, Unfinished

### **Exterior**

Exterior	Wood, Stucco, Vinyl
Exterior Features	See Remarks
Roof	Asphalt Shingles
Construction	Wood, Stucco, Vinyl
Foundation	Concrete Perimeter

### **Additional Information**

Date Listed	March 25th, 2025
Days on Market	83
Zoning	Zone 05

DATA IS DEEMED RELIABLE BUT IS NOT GUARANTEED ACCURATE BY THE REALTORS® ASSOCIATION OF EDMONTON. COPYRIGHT 2025 BY THE REALTORS® ASSOCIATION OF EDMONTON. ALL RIGHTS RESERVED. Trademarks are owned or controlled by the Canadian Real Estate Association (CREA) and identify real estate professionals who are members of CREA (REALTOR®, REALTORS®) and/or the quality of services they provide (MLS®, Multiple Listing Service®)

Listing information last updated on June 16th, 2025 at 4:32pm MDT