

## \$645,600 - Nw-26-55 -20-4, Rural Lamont County

MLS® #E4428276

**\$645,600**

0 Bedroom, 0.00 Bathroom,  
Land Commercial on 0.00 Acres

None, Rural Lamont County, AB

Visit the Listing Brokerage (and/or listing REALTOR®) website to obtain additional information. 80.70 acres of HI zoned industrial land located in Lamont County just 6 minutes outside the town of Lamont. Quick access to Highway 15 and Alberta Highland Corridor (Highway 831 and Highway 15A).

### Essential Information

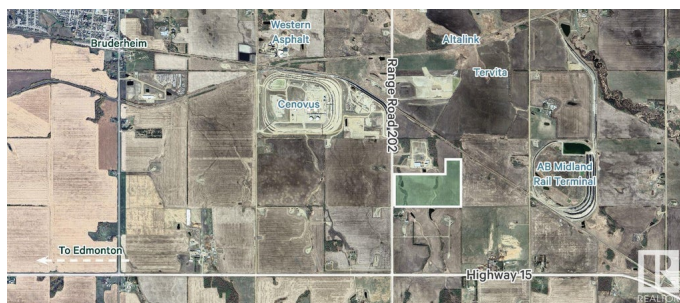
MLS® #	E4428276
Price	\$645,600
Bathrooms	0.00
Acres	0.00
Type	Land Commercial
Status	Active

### Community Information

Address	Nw-26-55 -20-4
Area	Rural Lamont County
Subdivision	None
City	Rural Lamont County
County	ALBERTA
Province	AB
Postal Code	T0B 0S0

### Additional Information

Date Listed	March 31st, 2025
-------------	------------------



Days on Market 124

Zoning Zone 60

DATA IS DEEMED RELIABLE BUT IS NOT GUARANTEED ACCURATE BY THE REALTORS® ASSOCIATION OF EDMONTON. COPYRIGHT 2025 BY THE REALTORS® ASSOCIATION OF EDMONTON. ALL RIGHTS RESERVED. Trademarks are owned or controlled by the Canadian Real Estate Association (CREA) and identify real estate professionals who are members of CREA (REALTOR®, REALTORS®) and/or the quality of services they provide (MLS®, Multiple Listing Service®)

Listing information last updated on August 2nd, 2025 at 9:47am MDT