

\$292,500 - 210 8942 156 Street, Edmonton

MLS® #E4429446

\$292,500

2 Bedroom, 2.00 Bathroom, 1,191 sqft

Condo / Townhouse on 0.00 Acres

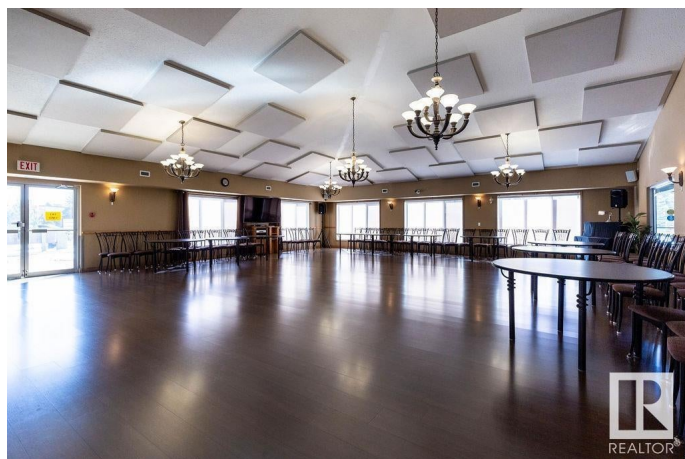
Meadowlark Park (Edmonton), Edmonton, AB

THE RENAISSANCE AT MEADOWLARK IS 55 PLUS LIVING AT IT'S VERY BEST! This spacious two bedroom, 2 bath unit with titled underground parking is in an incredible location! Easy access to Westend, Southside, and Downtown. Walking distance to Grocery Store, Pharmacy, Shopping, Medical Offices, and Edmonton Public Library. The private grounds are beautifully landscaped with walking paths, fountains, and benches where you can sit and enjoy it all. The common building has a library, games room, gym, pool tables, and much more. The active social club is incredibly welcoming and is a great way to get to know your neighbours. This unit has large windows, sliding glass doors to balcony, large living room, the primary bedroom has an ensuite and walk through closet as well as access to the outdoor space. The second bedroom is bright, a very good size, and is next to the second bathroom.

Built in 2000

Essential Information

MLS® #	E4429446
Price	\$292,500
Bedrooms	2
Bathrooms	2.00
Full Baths	2



Square Footage	1,191
Acres	0.00
Year Built	2000
Type	Condo / Townhouse
Sub-Type	Lowrise Apartment
Style	Single Level Apartment
Status	Active

Community Information

Address	210 8942 156 Street
Area	Edmonton
Subdivision	Meadowlark Park (Edmonton)
City	Edmonton
County	ALBERTA
Province	AB
Postal Code	T5R 5Z5

Amenities

Amenities	On Street Parking, Car Wash, Club House, Exercise Room, No Animal Home, No Smoking Home, Parking-Visitor, Party Room, Patio, Recreation Room/Centre, Secured Parking, Security Door, Social Rooms, Storage Cage
Parking	Heated, Insulated, Underground

Interior

Interior Features	ensuite bathroom
Appliances	Dishwasher-Built-In, Freezer, Refrigerator, Stacked Washer/Dryer, Stove-Electric, Window Coverings
Heating	In Floor Heat System, Natural Gas
# of Stories	4
Stories	1
Has Basement	Yes
Basement	None, No Basement

Exterior

Exterior	Wood, Stone, Stucco
Exterior Features	Gated Community, Landscaped, Picnic Area, Public Transportation, Shopping Nearby
Roof	Asphalt Shingles
Construction	Wood, Stone, Stucco

Foundation Concrete Perimeter

Additional Information

Date Listed April 7th, 2025
Days on Market 36
Zoning Zone 22
Condo Fee \$668

DATA IS DEEMED RELIABLE BUT IS NOT GUARANTEED ACCURATE BY THE REALTORS® ASSOCIATION OF EDMONTON. COPYRIGHT 2025 BY THE REALTORS® ASSOCIATION OF EDMONTON. ALL RIGHTS RESERVED.Trademarks are owned or controlled by the Canadian Real Estate Association (CREA) and identify real estate professionals who are members of CREA (REALTOR®, REALTORS®) and/or the quality of services they provide (MLS®, Multiple Listing Service®)
Listing information last updated on May 14th, 2025 at 1:32am MDT