

\$139,900 - 240 Spruce Ridge Road, Spruce Grove

MLS® #E4429502

\$139,900

1 Bedroom, 1.00 Bathroom, 648 sqft

Condo / Townhouse on 0.00 Acres

Spruce Ridge, Spruce Grove, AB

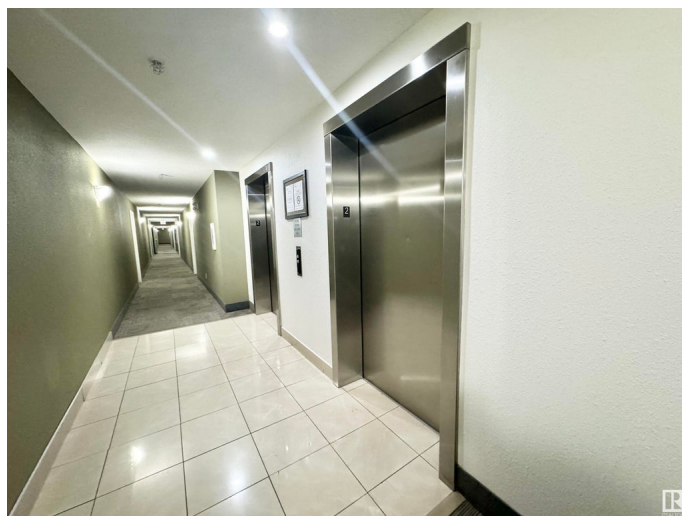
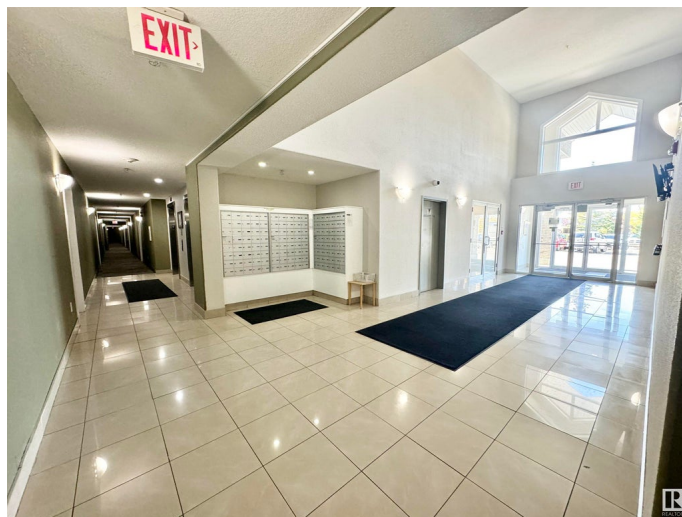
Great buy! Spacious 1 bedroom apartment in Spruce Grove. Open floor plan, big bedroom, in-suite storage room and balcony. Unit offers 5 appliances, in-suite laundry with washer and dryer and 1 underground heated parking stall. Built-in intercom. Walk to Tri-Leisure Centre, shopping and transportation. Low condo fee covers daily building maintenance and cleaning, professional management, reserve fund contribution, water and heat. Great price, great place to call home!

Built in 2008

Essential Information

MLS® #	E4429502
Price	\$139,900
Bedrooms	1
Bathrooms	1.00
Full Baths	1
Square Footage	648
Acres	0.00
Year Built	2008
Type	Condo / Townhouse
Sub-Type	Lowrise Apartment
Style	Single Level Apartment
Status	Active

Community Information



Address	240 Spruce Ridge Road
Area	Spruce Grove
Subdivision	Spruce Ridge
City	Spruce Grove
County	ALBERTA
Province	AB
Postal Code	T7X 0G5

Amenities

Amenities	Intercom, Parking-Visitor, Storage-In-Suite
Parking Spaces	1
Parking	Heated, Parkade

Interior

Appliances	Dishwasher-Built-In, Garage Opener, Refrigerator, Stacked Washer/Dryer, Stove-Electric
Heating	Baseboard, Hot Water, Natural Gas
# of Stories	4
Stories	1
Has Basement	Yes
Basement	None, No Basement

Exterior

Exterior	Wood, Stucco
Exterior Features	Fenced, Landscaped, Playground Nearby, Public Transportation, Schools, Shopping Nearby
Roof	Asphalt Shingles
Construction	Wood, Stucco
Foundation	Concrete Perimeter

Additional Information

Date Listed	April 6th, 2025
Days on Market	71
Zoning	Zone 91
Condo Fee	\$347

DATA IS DEEMED RELIABLE BUT IS NOT GUARANTEED ACCURATE BY THE REALTORS® ASSOCIATION OF EDMONTON. COPYRIGHT 2025 BY THE REALTORS® ASSOCIATION OF EDMONTON. ALL RIGHTS RESERVED. Trademarks are owned or controlled by the Canadian Real Estate Association (CREA) and identify real estate professionals who are members of CREA (REALTOR®, REALTORS®) and/or the quality of services they provide (MLS®, Multiple Listing Service®)

Listing information last updated on June 16th, 2025 at 3:47am MDT