

\$655,000 - 3938 Cherrycove Sw Sw, Edmonton

MLS® #E4430052

\$655,000

5 Bedroom, 4.00 Bathroom, 2,173 sqft

Single Family on 0.13 Acres

The Orchards At Ellerslie, Edmonton, Alberta

Discover your dream home in the heart of the Orchard community! This charming single-family detached house sits on a desirable corner lot in a peaceful crescent, providing privacy and a spacious feel. Enjoy easy lake access, direct backyard entry to a scenic walking trail, and close proximity to parks and top-rated schools. Just a short drive from the airport, this home combines convenience with tranquility, making it an ideal sanctuary for families (id:36535)

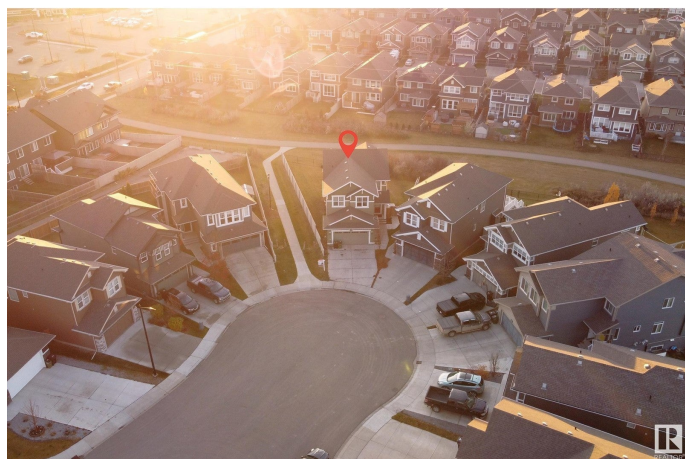
Built in 2015

Essential Information

Listing #	E4430052
Price	\$655,000
Bedrooms	5
Bathrooms	4.00
Half Baths	1
Square Footage	2,173
Acres	0.13
Year Built	2015
Type	Single Family
Sub-Type	Freehold

Community Information

Address	3938 Cherrycove Sw Sw
Subdivision	The Orchards At Ellerslie
City	Edmonton
Province	Alberta



Postal Code T6X2B3

Amenities

Amenities Ceiling - 9ft
Features See remarks, No Animal Home, No Smoking Home
Parking Attached Garage
of Garages 1

Interior

Appliances Dishwasher, Dryer, Garage door opener, Hood Fan, Microwave, Refrigerator, Gas stove(s), Washer
Heating Forced air
of Stories 2
Has Basement Yes
Basement Type Full (Finished)
Basement Development Finished

Listing Details

Listing Office Courtesy Of Vishavjit Mander and . Prabhjot Kaur Of Century 21 Smart Realty

Powered by:



The trademarks MLS®, Multiple Listing Service® and the associated logos are owned by The Canadian Real Estate Association (CREA) and identify the quality of services provided by real estate professionals who are members of CREA. REALTOR®. Member of CREA and more.

Listing information last updated on April 30th, 2025 at 10:17pm MDT