

\$775,000 - 1840 Lemieux Close, Edmonton

MLS® #E4432472

\$775,000

5 Bedroom, 3.50 Bathroom, 2,508 sqft

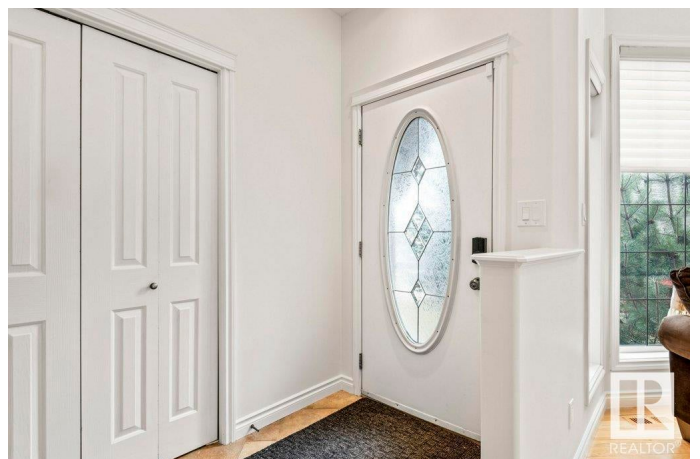
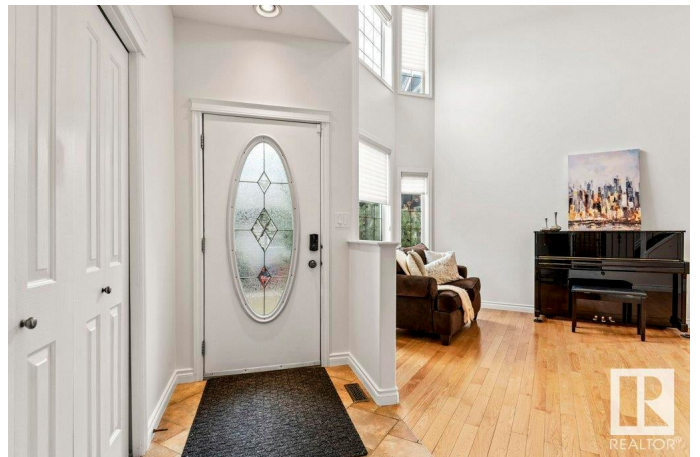
Single Family on 0.00 Acres

Leger, Edmonton, AB

Gorgeous Renovated Home with Sunny SOUTHWEST MONSTER PIE LOT - Immaculately Maintained Home Featuring Over 2500 Square Feet Above Grade AND a Fully Finished Basement. Upon Entering - 2 Storey VAULTED living room and dining room. Along the back of the house with WONDERFUL SIGHTLINES: A Functional NEWLY RENOVATED Kitchen with Tons of Cabinet and Countertop Space and a Big Pantry, Sunny Breakfast Nook and Back Family Room with GAS FIREPLACE Featuring Beautiful Windows gives this house a Cozy Vibe. MAIN FLOOR DEN!! Spacious MUD ROOM as you enter from the Garage. Upper Level with Three Generous Bedrooms and a Huge Bonus Room Equipped with Vaulted Ceilings. Master Bedroom has a 5 Piece Ensuite and Separate Walk In Closet. Finished Basement Offers TWO more Bedrooms, Bathroom, and Living Room. NEARLY QUARTER ACRE LOT Fully Landscaped and Fenced Yard with Deck and Oversized Shed, BRAND NEW ROOF AND FURNACE, Tankless Hot Water and Humidifier (2021), Garage Heater and Epoxy Floor(2023) JUST MOVE ON IN AND ENJOY!

Built in 2005

Essential Information



MLS® #	E4432472
Price	\$775,000
Bedrooms	5
Bathrooms	3.50
Full Baths	3
Half Baths	1
Square Footage	2,508
Acres	0.00
Year Built	2005
Type	Single Family
Sub-Type	Detached Single Family
Style	2 Storey
Status	Active

Community Information

Address	1840 Lemieux Close
Area	Edmonton
Subdivision	Leger
City	Edmonton
County	ALBERTA
Province	AB
Postal Code	T6R 0A9

Amenities

Amenities	Bar, Deck, No Smoking Home, Vinyl Windows
Parking	Double Garage Attached

Interior

Interior Features	ensuite bathroom
Appliances	Air Conditioning-Central, Dishwasher-Built-In, Dryer, Fan-Ceiling, Microwave Hood Fan, Stove-Gas, Washer, Refrigerators-Two
Heating	Forced Air-1, Natural Gas
Fireplace	Yes
Fireplaces	Corner, Insert, Tile Surround
Stories	3
Has Basement	Yes
Basement	Full, Finished

Exterior

Exterior	Wood, Stone, Vinyl
Exterior Features	Cul-De-Sac, Fenced, Landscaped, No Back Lane, Playground Nearby, Schools, Shopping Nearby
Lot Description	25'x140'
Roof	Asphalt Shingles
Construction	Wood, Stone, Vinyl
Foundation	Concrete Perimeter

School Information

Elementary	GEORE H LUCK
Middle	RIVERBEND
High	LILLIAN OSBORNE

Additional Information

Date Listed	April 24th, 2025
Days on Market	6
Zoning	Zone 14

DATA IS DEEMED RELIABLE BUT IS NOT GUARANTEED ACCURATE BY THE REALTORS® ASSOCIATION OF EDMONTON. COPYRIGHT 2025 BY THE REALTORS® ASSOCIATION OF EDMONTON. ALL RIGHTS RESERVED. Trademarks are owned or controlled by the Canadian Real Estate Association (CREA) and identify real estate professionals who are members of CREA (REALTOR®, REALTORS®) and/or the quality of services they provide (MLS®, Multiple Listing Service®)

Listing information last updated on April 30th, 2025 at 12:47pm MDT