

# \$969,000 - 1125 Gyrfalcon Crescent, Edmonton

MLS® #E4434936

**\$969,000**

3 Bedroom, 3.00 Bathroom, 2,831 sqft  
Single Family on 0.00 Acres

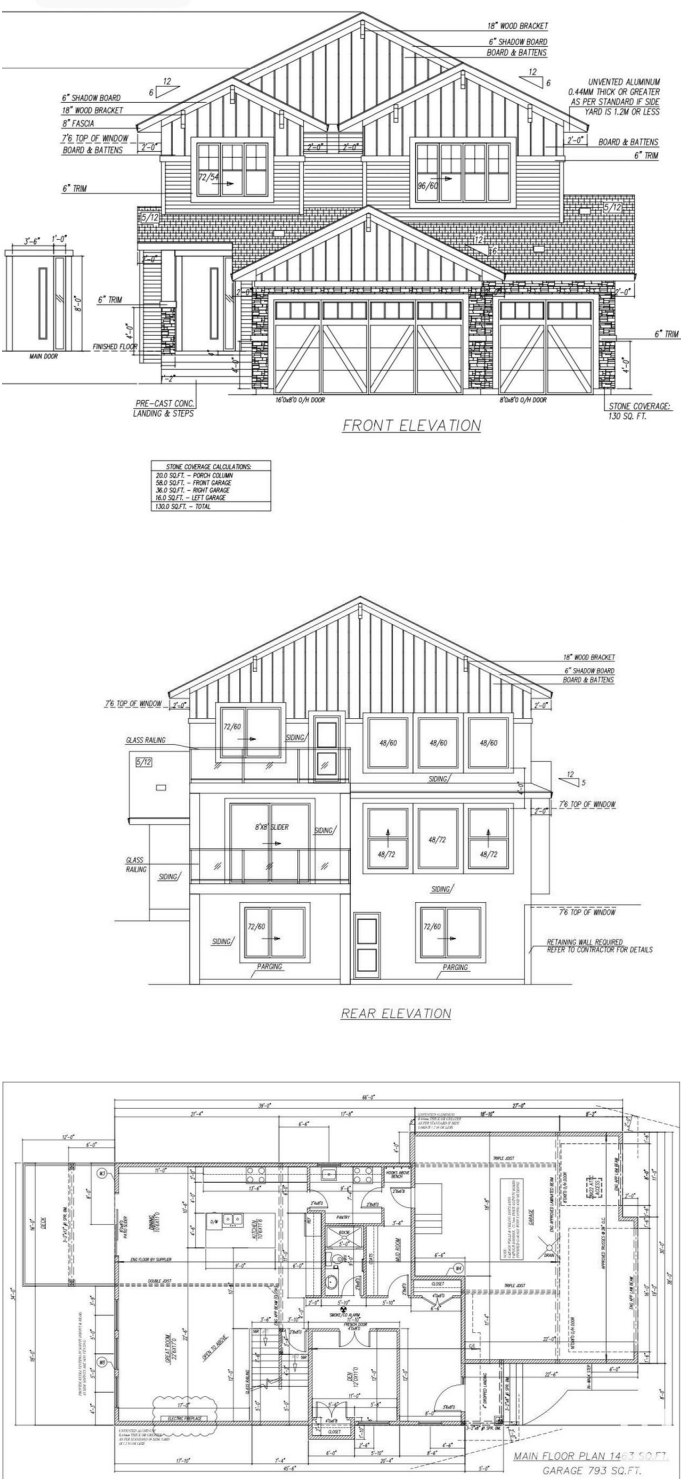
Hawks Ridge, Edmonton, AB

Welcome to this exceptional walkout, triple garage custom-built home in the scenic community of Hawks Ridge, backing directly onto a creek and lush green space. Nestled beside Big Lake and surrounded by ponds, wetlands, and walking trails, this nature-rich setting also offers quick access to shopping, recreation, and all lifestyle amenities. Featuring approximately 2,850 sq.ft. of beautifully designed living space, this home offers a main floor bedroom/den with a full 3-pc bath, soaring open-to-above ceilings in the living room, and a spice kitchen perfect for serious home chefs. The upper level boasts a luxurious primary suite with a spa-like 5-pc ensuite and massive walk-in closet, along with two additional bedrooms each with their own walk-in closets a convenient laundry room, and a spacious bonus room overlooking the main floor. Still under construction, this home can be customized with your preferred finishes and color schemes. Possession available Nov/Dec 2025. Donâ€™t miss this rare opportunity!

Built in 2025

## Essential Information

MLS® # E4434936  
Price \$969,000



Bedrooms	3
Bathrooms	3.00
Full Baths	3
Square Footage	2,831
Acres	0.00
Year Built	2025
Type	Single Family
Sub-Type	Detached Single Family
Style	2 Storey
Status	Active

### Community Information

Address	1125 Gyrfalcon Crescent
Area	Edmonton
Subdivision	Hawks Ridge
City	Edmonton
County	ALBERTA
Province	AB
Postal Code	T5S 0S5

### Amenities

Amenities	Ceiling 10 ft., Deck, Secured Parking, See Remarks, 9 ft. Basement Ceiling
Parking	Triple Garage Attached

### Interior

Interior Features	ensuite bathroom
Appliances	See Remarks
Heating	Forced Air-1, Natural Gas
Fireplace	Yes
Fireplaces	Glass Door
Stories	2
Has Basement	Yes
Basement	Full, Unfinished

### Exterior

Exterior	Wood, Stone, Vinyl
Exterior Features	Commercial, Creek, Schools, See Remarks
Roof	Asphalt Shingles

Construction	Wood, Stone, Vinyl
Foundation	Concrete Perimeter

**School Information**

Elementary	DAVID THOMAS KING SCHOOL
Middle	DAVID THOMAS KING SCHOOL
High	JASPER PLACE SCHOOL

**Additional Information**

Date Listed	May 6th, 2025
Days on Market	41
Zoning	Zone 59

DATA IS DEEMED RELIABLE BUT IS NOT GUARANTEED ACCURATE BY THE REALTORS® ASSOCIATION OF EDMONTON. COPYRIGHT 2025 BY THE REALTORS® ASSOCIATION OF EDMONTON. ALL RIGHTS RESERVED.Trademarks are owned or controlled by the Canadian Real Estate Association (CREA) and identify real estate professionals who are members of CREA (REALTOR®, REALTORS®) and/or the quality of services they provide (MLS®, Multiple Listing Service®)

Listing information last updated on June 16th, 2025 at 12:02am MDT