

\$774,900

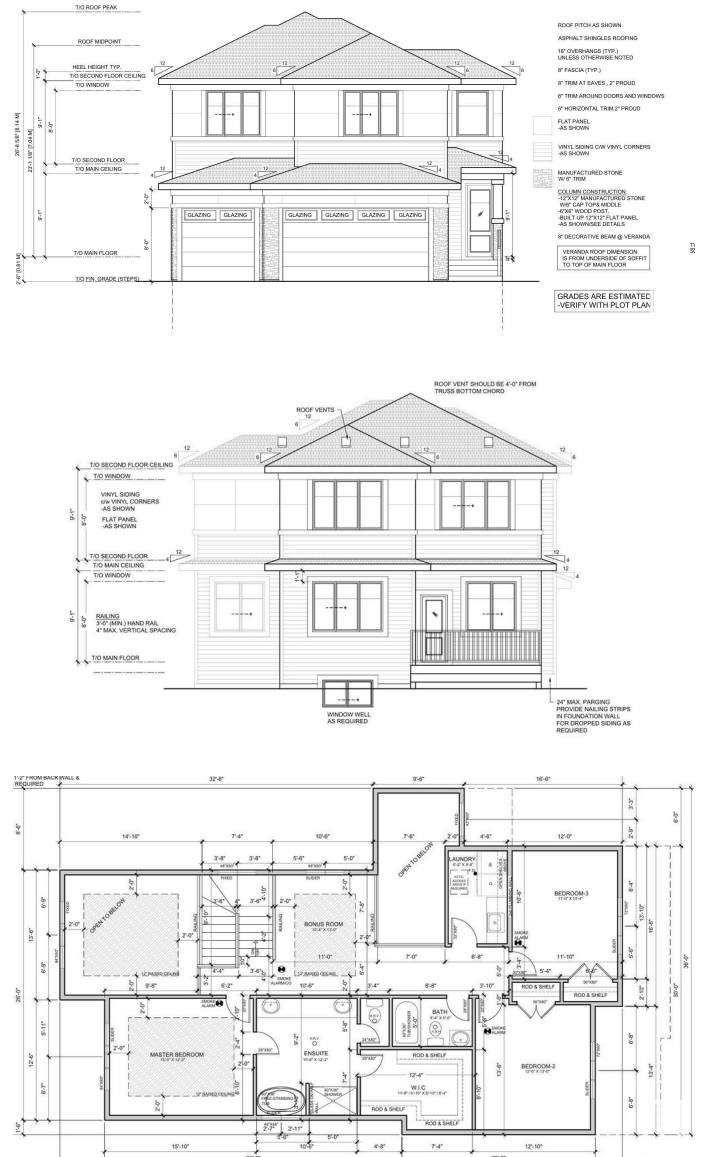
Copperhaven, Spruce Grove, AB

Welcome to this stunning TRIPLE GARAGE HOME nestled in a quiet CUL-DE-SAC, backing onto peaceful green space and offering over 2,400+ sq ft (RMS) of thoughtfully designed living. This elegant residence features 4 spacious bedrooms and 3 full bathrooms, including a MAIN FLOOR FULL BEDROOM AND BATHROOM—perfect for guests or multigenerational living. The home showcases TWO impressive open-to-above LIVING AREAS, a modern gourmet kitchen with a separate SPICE KITCHEN, and is filled with premium upgrades throughout. Soaring 18-foot ceilings, designer lighting, feature walls, triple-pane windows, and an electric fireplace combine to create a space that is both luxurious and inviting. Abundant natural light streams through large windows, enhancing the open, airy feel of the home. A SEPARATE SIDE ENTRANCE to the basement offers incredible potential for future development.

Built in 2025

Essential Information

MLS® #	E4435580
Price	\$774,900
Bedrooms	4
Bathrooms	3.00



Full Baths	3
Square Footage	2,289
Acres	0.00
Year Built	2025
Type	Single Family
Sub-Type	Detached Single Family
Style	2 Storey
Status	Active

Community Information

Address	12 Cobblestone Gate
Area	Spruce Grove
Subdivision	Copperhaven
City	Spruce Grove
County	ALBERTA
Province	AB
Postal Code	T7X 4E4

Amenities

Amenities	Carbon Monoxide Detectors, Ceiling 9 ft., Exterior Walls- 2"x6", No Animal Home, No Smoking Home, See Remarks, HRV System, Natural Gas BBQ Hookup
Parking	Triple Garage Attached

Interior

Interior Features	ensuite bathroom
Appliances	See Remarks
Heating	See Remarks
Stories	2
Has Basement	Yes
Basement	Full, Unfinished

Exterior

Exterior	Wood, See Remarks
Exterior Features	Backs Onto Park/Trees, Corner Lot, Cul-De-Sac, Schools, See Remarks
Roof	Asphalt Shingles
Construction	Wood, See Remarks
Foundation	Slab

Additional Information

Date Listed May 7th, 2025

Days on Market 40

Zoning Zone 91

DATA IS DEEMED RELIABLE BUT IS NOT GUARANTEED ACCURATE BY THE REALTORS® ASSOCIATION OF EDMONTON. COPYRIGHT 2025 BY THE REALTORS® ASSOCIATION OF EDMONTON. ALL RIGHTS RESERVED. Trademarks are owned or controlled by the Canadian Real Estate Association (CREA) and identify real estate professionals who are members of CREA (REALTOR®, REALTORS®) and/or the quality of services they provide (MLS®, Multiple Listing Service®)

Listing information last updated on June 16th, 2025 at 10:02am MDT