

# \$499,000 - 428 Crystal Creek Link, Leduc

MLS® #E4436382

**\$499,000**

4 Bedroom, 3.00 Bathroom, 1,657 sqft  
Single Family on 0.00 Acres

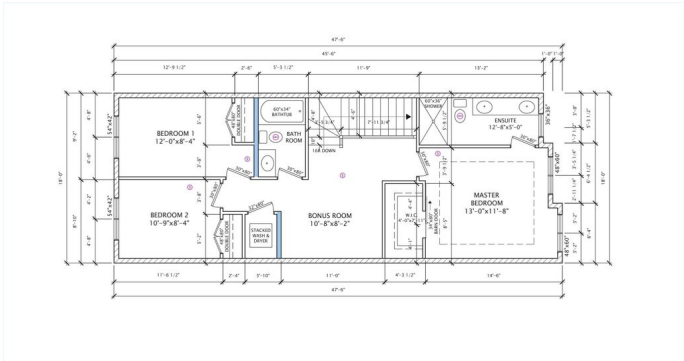
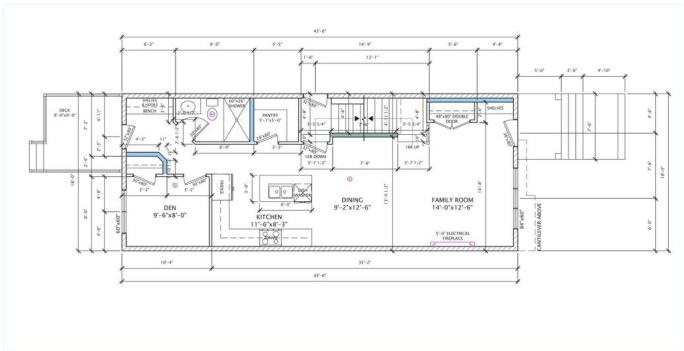
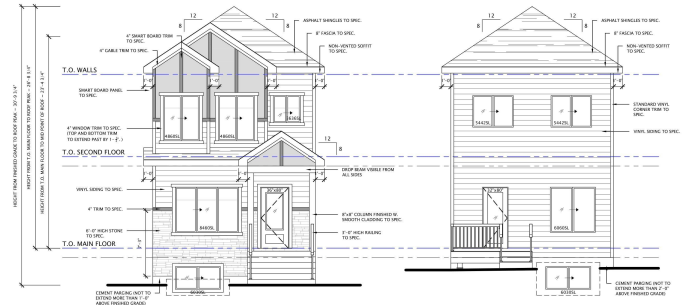
Crystal Creek\_LEDU, Leduc, AB

Discover this beautifully designed 1657 sqft home in one of Leduc’s most sought-after Community WEST CREEK, just a 2-minute walk to school and close to all major amenities. Perfect for families, this home features a FULL BATHROOM and BEDROOM on the MAIN FLOOR—ideal for guests or multi-generational living. The open-concept layout includes a modern L-shaped kitchen, spacious living and dining areas, and 9 FT CEILING on all levels, enhancing the bright and airy feel. Upstairs, you’ll find a BONUS ROOM, perfect for family movie nights or a home office. The second floor also boasts three generously sized bedrooms, including a luxurious master with a private ensuite. Enjoy outdoor living with a built-in deck, and park with ease in the detached double garage. 2 INDENT CEILING'S, 2 FEATURE WALLS and MODERN FIREPLACE makes this home truly remarkable. Future potential abounds with a SIDE ENTRY to the basement, featuring 2 WINDOWS. DOUBLE DETACH GARAGE, APPLIANCES, LANDSCAPING and DECK included.

Built in 2025

## Essential Information

|        |           |
|--------|-----------|
| MLS® # | E4436382  |
| Price  | \$499,000 |



|                |                        |
|----------------|------------------------|
| Bedrooms       | 4                      |
| Bathrooms      | 3.00                   |
| Full Baths     | 3                      |
| Square Footage | 1,657                  |
| Acres          | 0.00                   |
| Year Built     | 2025                   |
| Type           | Single Family          |
| Sub-Type       | Detached Single Family |
| Style          | 2 Storey               |
| Status         | Active                 |

### Community Information

|             |                        |
|-------------|------------------------|
| Address     | 428 Crystal Creek Link |
| Area        | Leduc                  |
| Subdivision | Crystal Creek_LEDU     |
| City        | Leduc                  |
| County      | ALBERTA                |
| Province    | AB                     |
| Postal Code | T9E 1N3                |

### Amenities

|           |                        |
|-----------|------------------------|
| Amenities | Ceiling 9 ft.          |
| Parking   | Double Garage Detached |

### Interior

|                   |  |
|-------------------|--|
| Interior Features | ensuite bathroom   |
| Appliances        | Dishwasher-Built-In, Dryer, Microwave Hood Fan, Refrigerator, Stove-Electric, Washer |
| Heating           | Forced Air-2, Natural Gas  |
| Fireplace         | Yes  |
| Fireplaces        | Remote Control, Wall Mount   |
| Stories           | 2  |
| Has Basement      | Yes  |
| Basement          | Full, See Remarks  |

### Exterior

|                   |  |
|-------------------|--|
| Exterior          | Wood, Vinyl  |
| Exterior Features | Airport Nearby, Park/Reserve, Schools, Stream/Pond |
| Roof              | Asphalt Shingles                                   |

|              |                    |
|--------------|--------------------|
| Construction | Wood, Vinyl        |
| Foundation   | Concrete Perimeter |

**School Information**

|        |                        |
|--------|------------------------|
| Middle | Ohpaho Seconday School |
|--------|------------------------|

**Additional Information**

|                |                |
|----------------|----------------|
| Date Listed    | May 14th, 2025 |
| Days on Market | 34             |
| Zoning         | Zone 81        |

DATA IS DEEMED RELIABLE BUT IS NOT GUARANTEED ACCURATE BY THE REALTORS® ASSOCIATION OF EDMONTON. COPYRIGHT 2025 BY THE REALTORS® ASSOCIATION OF EDMONTON. ALL RIGHTS RESERVED.Trademarks are owned or controlled by the Canadian Real Estate Association (CREA) and identify real estate professionals who are members of CREA (REALTOR®, REALTORS®) and/or the quality of services they provide (MLS®, Multiple Listing Service®)

Listing information last updated on June 16th, 2025 at 9:31pm MDT