

# \$118,000 - 4810 Millwoods Road South Road, Edmonton

MLS® #E4436467

**\$118,000**

2 Bedroom, 1.00 Bathroom, 970 sqft

Condo / Townhouse on 0.00 Acres

Pollard Meadows, Edmonton, AB

Cozy & Convenient Living in Millwoods!

Welcome to this well-laid-out 2 bedroom, 1 bathroom condo that perfectly balances comfort and function. Whether you're a first-time buyer, downsizing, or looking for an investment property, this home checks all the boxes! Step inside and you'll instantly notice how the thoughtful layout flows effortlessly from room to room, creating a bright and open atmosphere. The spacious living area leads right onto your private balcony – perfect for sipping your morning coffee, catching some fresh air, or enjoying a quiet evening. You'll love the in-unit storage room, giving you extra space to keep things organized without sacrificing your square footage. And don't worry about lugging laundry up and down stairs – there's convenient laundry located on every floor in the building! Tucked away in a friendly community close to parks, schools, shopping, and public transit, this Millwoods gem is ready to welcome its next happy homeowner.

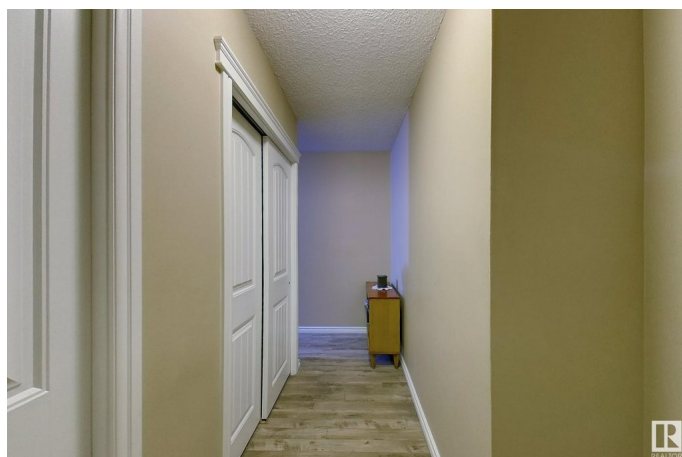
Built in 1981

## Essential Information

MLS® # E4436467

Price \$118,000

Bedrooms 2



Bathrooms	1.00
Full Baths	1
Square Footage	970
Acres	0.00
Year Built	1981
Type	Condo / Townhouse
Sub-Type	Lowrise Apartment
Style	Single Level Apartment
Status	Active

### Community Information

Address	4810 Millwoods Road South Road
Area	Edmonton
Subdivision	Pollard Meadows
City	Edmonton
County	ALBERTA
Province	AB
Postal Code	T6L 5N9

### Amenities

Amenities	Parking-Plug-Ins, Parking-Visitor, Storage-In-Suite
Parking	Stall

### Interior

Appliances	Dishwasher-Built-In, Fan-Ceiling, Refrigerator, Stove-Electric, Window Coverings
Heating	Hot Water, Natural Gas
# of Stories	4
Stories	1
Has Basement	Yes
Basement	None, No Basement

### Exterior

Exterior	Wood, Stucco
Exterior Features	Playground Nearby, Shopping Nearby
Roof	Asphalt Shingles
Construction	Wood, Stucco
Foundation	Concrete Perimeter

### Additional Information

Date Listed	May 14th, 2025
Days on Market	33
Zoning	Zone 29
Condo Fee	\$552

DATA IS DEEMED RELIABLE BUT IS NOT GUARANTEED ACCURATE BY THE REALTORS® ASSOCIATION OF EDMONTON. COPYRIGHT 2025 BY THE REALTORS® ASSOCIATION OF EDMONTON. ALL RIGHTS RESERVED. Trademarks are owned or controlled by the Canadian Real Estate Association (CREA) and identify real estate professionals who are members of CREA (REALTOR®, REALTORS®) and/or the quality of services they provide (MLS®, Multiple Listing Service®)

Listing information last updated on June 16th, 2025 at 9:47am MDT