

## **\$406,500 - 231 Brookview Way, Stony Plain**

MLS® #E4437099

**\$406,500**

4 Bedroom, 2.00 Bathroom, 1,050 sqft

Single Family on 0.00 Acres

Brookview, Stony Plain, AB

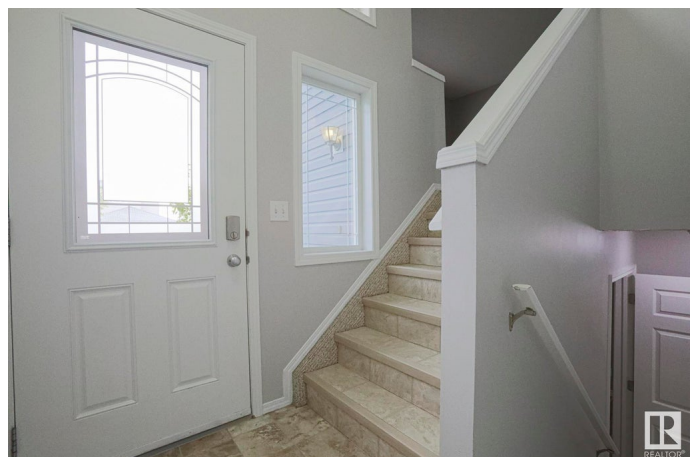
What a gem!! Fully Finished family home in Stony Plain, completely turn key, move in-ready, and offering IMMEDIATE POSSESSION! Upgrades incl 8 ft garage door, 20x20 garage (2016), HWT (2024), Natural gas BBQ connection, appliances (approx 2018). GREAT LAYOUT!! Big beautiful bilevel w a living room w east facing windows, WIDE OPEN KITCHEN/dining room. NEW double patio doors out to your deck! Big Built in PANTRY! Concrete patio, lovely landscaping, 2 beds up incl a primary w a big walk in closet, 2nd room has a TV that stays!! Lovely 4 pc bathroom w fresh paint! Basement is SO COOL!! 2 more bedrooms, w CALIFORNIA CLOSET organizers. A full Laundry area w TONS of storage!! BIG BATHROOM w storage, and a FULL JACUZZI TUB! NOT DONE! Extra den attached to the bedroom. Do whatever you want!! 4th bedroom feels like a SUITE w attached bathroom! OVERSIZED GARAGE, Fully landscaped, walking distance to groceries, restaurants, MAVERICK DONUTS!! So much love and care, original owners!! Comes w 3 window AC units :)

Built in 2007

### **Essential Information**

MLS® #

E4437099



Price	\$406,500
Bedrooms	4
Bathrooms	2.00
Full Baths	2
Square Footage	1,050
Acres	0.00
Year Built	2007
Type	Single Family
Sub-Type	Detached Single Family
Style	Bi-Level
Status	Active

### Community Information

Address	231 Brookview Way
Area	Stony Plain
Subdivision	Brookview
City	Stony Plain
County	ALBERTA
Province	AB
Postal Code	T7X 2X7

### Amenities

Amenities	Off Street Parking, Detectors Smoke, Vinyl Windows
Parking	Double Garage Detached, Over Sized

### Interior

Appliances	Dishwasher-Built-In, Dryer, Garage Control, Garage Opener, Refrigerator, Stove-Electric, Washer
Heating	Forced Air-1, Natural Gas
Stories	2
Has Basement	Yes
Basement	Full, Finished

### Exterior

Exterior	Wood, Vinyl
Exterior Features	Back Lane, Golf Nearby, Playground Nearby, Public Transportation, Schools, Shopping Nearby
Roof	Asphalt Shingles
Construction	Wood, Vinyl

Foundation                      Concrete Perimeter

**Additional Information**

Date Listed                      May 15th, 2025

Days on Market                32

Zoning                            Zone 91

DATA IS DEEMED RELIABLE BUT IS NOT GUARANTEED ACCURATE BY THE REALTORS® ASSOCIATION OF EDMONTON. COPYRIGHT 2025 BY THE REALTORS® ASSOCIATION OF EDMONTON. ALL RIGHTS RESERVED.Trademarks are owned or controlled by the Canadian Real Estate Association (CREA) and identify real estate professionals who are members of CREA (REALTOR®, REALTORS®) and/or the quality of services they provide (MLS®, Multiple Listing Service®)

Listing information last updated on June 16th, 2025 at 9:17pm MDT