

## \$479,900 - 530 Reynalds Wynd, Leduc

MLS® #E4438170

### \$479,900

3 Bedroom, 2.50 Bathroom, 1,581 sqft  
Single Family on 0.00 Acres

Robinson, Leduc, AB

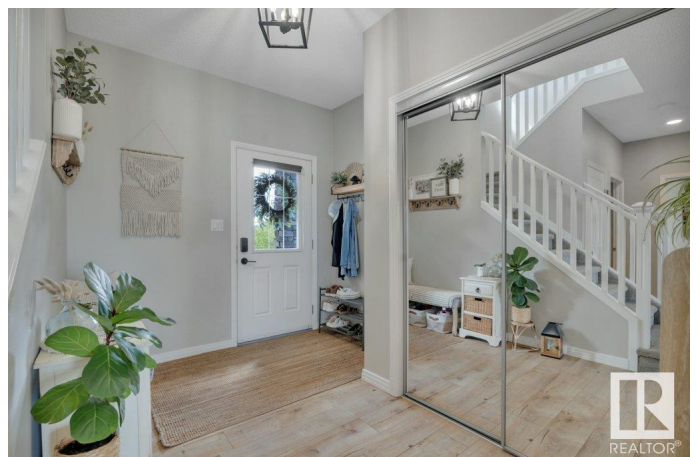
#### NICELY UPDATED! MOVE IN READY!

Searching for that pinterest worthy home with all bells and whistles? This 1581 sq ft 3 bed, 2.5 bath beaut shows a 10! Feat: A/C, heated garage, new luxury laminate flooring on the main, newer carpet upstairs, updated paint, new stainless steel appliances, lighting, & more! Classic open concept layout w/ gas fireplace creates the ideal space for entertaining friends & family. Large west facing windows, 9' ceiling, granite countertops w/ corner pantry, main floor laundry, 2 pce bath, & access to the backyard. Upstairs brings additional 4 pce bath, linen storage, & 3 good sized bedrooms, including the primary bed w/ walk in closet & 5 pce ensuite! The basement is unfinished but space to add the 4th bedroom, rec room, or keep as is for ample storage. 22' x 24' heated garage fits most half ton trucks. Fully fenced & landscaped w/ no neighbours directly behind too! Blocks to multiple playgrounds & quick access to Hwy 2A & LRC. Great package, shows well.

Built in 2013

#### Essential Information

MLS® #	E4438170
Price	\$479,900
Bedrooms	3



Bathrooms	2.50
Full Baths	2
Half Baths	1
Square Footage	1,581
Acres	0.00
Year Built	2013
Type	Single Family
Sub-Type	Detached Single Family
Style	2 Storey
Status	Active

### Community Information

Address	530 Reynolds Wynd
Area	Leduc
Subdivision	Robinson
City	Leduc
County	ALBERTA
Province	AB
Postal Code	T9E 0T2

### Amenities

Amenities	Air Conditioner, Ceiling 9 ft., Deck, Hot Water Natural Gas, Vinyl Windows, See Remarks
Parking	Double Garage Attached, Heated, Over Sized

### Interior

Appliances	Air Conditioning-Central, Dishwasher-Built-In, Dryer, Garage Control, Garage Opener, Refrigerator, Stove-Electric, Washer, Window Coverings, Garage Heater
Heating	Forced Air-1, Natural Gas
Fireplace	Yes
Fireplaces	Corner
Stories	2
Has Basement	Yes
Basement	Full, Unfinished

### Exterior

Exterior	Wood, Stone, Vinyl
Exterior Features	Airport Nearby, Landscaped, Playground Nearby, Public Transportation,

	Schools, Shopping Nearby
Roof	Asphalt Shingles
Construction	Wood, Stone, Vinyl
Foundation	Concrete Perimeter

### **Additional Information**

Date Listed	May 23rd, 2025
Days on Market	25
Zoning	Zone 81

DATA IS DEEMED RELIABLE BUT IS NOT GUARANTEED ACCURATE BY THE REALTORS® ASSOCIATION OF EDMONTON. COPYRIGHT 2025 BY THE REALTORS® ASSOCIATION OF EDMONTON. ALL RIGHTS RESERVED. Trademarks are owned or controlled by the Canadian Real Estate Association (CREA) and identify real estate professionals who are members of CREA (REALTOR®, REALTORS®) and/or the quality of services they provide (MLS®, Multiple Listing Service®)

Listing information last updated on June 16th, 2025 at 10:17pm MDT