

# **\$479,900 - 3907 20 Avenue, Edmonton**

MLS® #E4439316

**\$479,900**

6 Bedroom, 3.00 Bathroom, 1,098 sqft

Single Family on 0.00 Acres

Daly Grove, Edmonton, AB

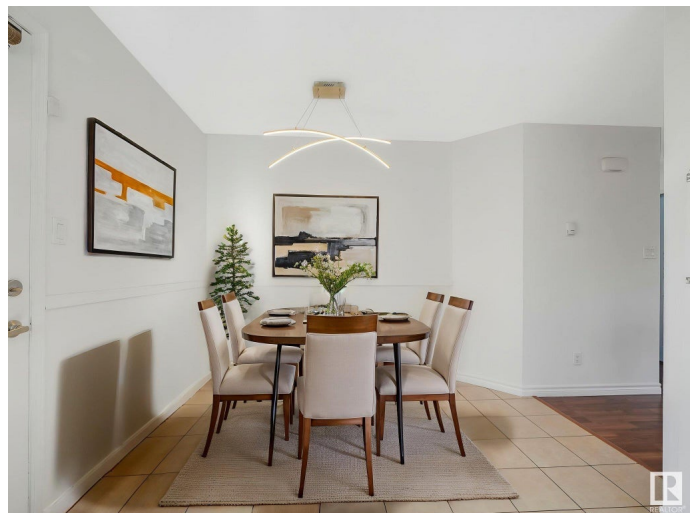
Welcome to a truly special opportunity in South Edmonton—an exceptional WALK UP BI-LEVEL of unbeatable value w/ almost 2,100 SQFT of developed space. This WELL-CARED-for home stands out for its solid craftsmanship, LAYOUT & ABUNDANT SPACE. Upon entry, you™ll be greeted by LARGE BRAND NEW WINDOWS, illuminating every corner of this NEWLY PAINTED home. The UPDATED kitchen, outfitted w/ QUARTZ COUNTERTOPS is a cheerful hub for daily life—a SPACIOUS DINING AREA perfect for family gatherings or guests. Boasting a total of 6 BEDRMS & 3 FULL BATHS, inclng a generous 4PC ENSUITE in the PRIMARY SUITE, this home offers incredible flexibility for large families, multi-generational living, or savvy investors. The FULLY FNSHD WALKUP BSMNT adds even more value w/ 3 ADDTL BEDRMS, a FULL BATH, a LARGE FAMILY RM & 2ND KITCHEN; SEPARATE ENTRNCE —ideal for a future SUITE! Start your summer in your SOUTH-FACING BACKYRD WITH DECK & OVERSIZED DOUBLE GARAGE & extra PARKING SPACE! Close to SCHOOLS, PARKS, PUBLIC TRNSIT & SHOPPING.

Built in 1989

## **Essential Information**

MLS® #

E4439316



|                |                        |
|----------------|------------------------|
| Price          | \$479,900              |
| Bedrooms       | 6                      |
| Bathrooms      | 3.00                   |
| Full Baths     | 3                      |
| Square Footage | 1,098                  |
| Acres          | 0.00                   |
| Year Built     | 1989                   |
| Type           | Single Family          |
| Sub-Type       | Detached Single Family |
| Style          | Bi-Level               |
| Status         | Active                 |

### Community Information

|             |                |
|-------------|----------------|
| Address     | 3907 20 Avenue |
| Area        | Edmonton       |
| Subdivision | Daly Grove     |
| City        | Edmonton       |
| County      | ALBERTA        |
| Province    | AB             |
| Postal Code | T6L 5G3        |

### Amenities

|                |   |
|----------------|---|
| Amenities      | Deck, Detectors Smoke, No Animal Home, No Smoking Home, Parking-Extra |
| Parking Spaces | 6   |
| Parking        | Double Garage Detached  |

### Interior

|                   |   |
|-------------------|---|
| Interior Features | ensuite bathroom  |
| Appliances        | Dishwasher-Built-In, Dryer, Hood Fan, Oven-Microwave, Washer, Refrigerators-Two, Stoves-Two |
| Heating           | Forced Air-1, Natural Gas   |
| Stories           | 2   |
| Has Suite         | Yes   |
| Has Basement      | Yes   |
| Basement          | Full, Finished  |

### Exterior

|          |             |
|----------|-------------|
| Exterior | Wood, Vinyl |
|----------|-------------|

|                   |   |
|-------------------|---|
| Exterior Features | Back Lane, Fenced, Landscaped, Playground Nearby, Public Transportation, Schools, Shopping Nearby |
| Roof              | Asphalt Shingles  |
| Construction      | Wood, Vinyl   |
| Foundation        | Concrete Perimeter  |

**School Information**

|            |                     |
|------------|---------------------|
| Elementary | Bisset School       |
| Middle     | Kate Chegwin School |
| High       | W.P. Wagner School  |

**Additional Information**

|                |                |
|----------------|----------------|
| Date Listed    | May 29th, 2025 |
| Days on Market | 18             |
| Zoning         | Zone 29        |

DATA IS DEEMED RELIABLE BUT IS NOT GUARANTEED ACCURATE BY THE REALTORS® ASSOCIATION OF EDMONTON. COPYRIGHT 2025 BY THE REALTORS® ASSOCIATION OF EDMONTON. ALL RIGHTS RESERVED.Trademarks are owned or controlled by the Canadian Real Estate Association (CREA) and identify real estate professionals who are members of CREA (REALTOR®, REALTORS®) and/or the quality of services they provide (MLS®, Multiple Listing Service®)

Listing information last updated on June 16th, 2025 at 9:02am MDT