

\$639,999 - 9934 225a Street, Edmonton

MLS® #E4440493

\$639,999

4 Bedroom, 2.50 Bathroom, 2,264 sqft

Single Family on 0.00 Acres

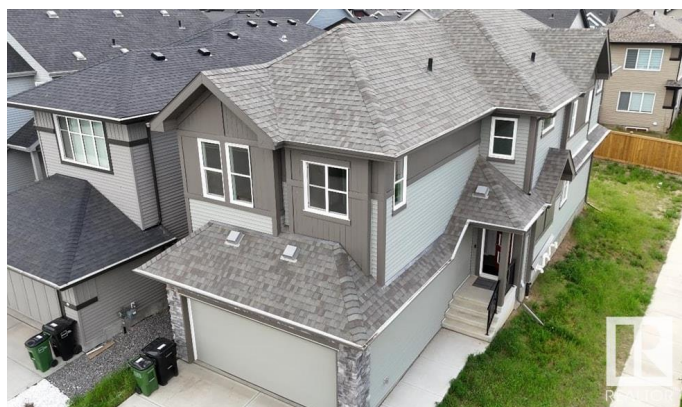
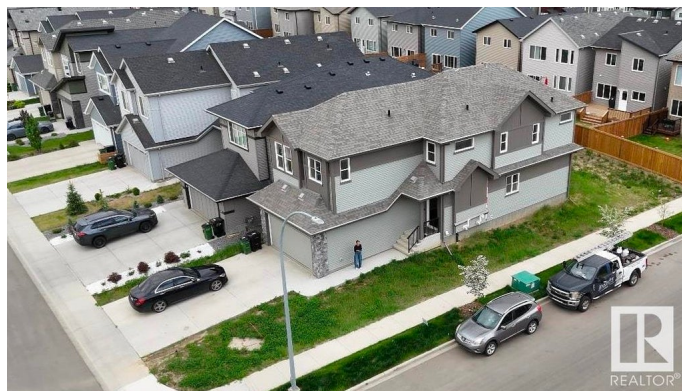
Secord, Edmonton, AB

Welcome to this 2021 built, two story house in Secord, Edmonton located on a corner lot. 2263 square feet, east facing and extra bright and nicely upgraded. Main floor has a powder room, a flex room/den, an upgraded kitchen with stainless steel appliances, dining and living room. Upstairs is a primary bedroom with 5 piece en-suite as well as a walk-in closet, 3 additional bedrooms and a main 4 piece washroom. Convenient upstairs laundry. A few upgrades worth mentioning are LVP on main floor, stainless steel appliances, railing with metal spindles through-out, brick lay subway backsplash, chimney hood fan, walkthrough pantry, bench in mud room, soaker tub and standing shower in en-suite, pot lights, quartz countertops. Unfinished basement for your creative touch.

Built in 2021

Essential Information

| | |
|----------------|-----------|
| MLS® # | E4440493 |
| Price | \$639,999 |
| Bedrooms | 4 |
| Bathrooms | 2.50 |
| Full Baths | 2 |
| Half Baths | 1 |
| Square Footage | 2,264 |
| Acres | 0.00 |



| | |
|------------|------------------------|
| Year Built | 2021 |
| Type | Single Family |
| Sub-Type | Detached Single Family |
| Style | 2 Storey |
| Status | Active |

Community Information

| | |
|-------------|------------------|
| Address | 9934 225a Street |
| Area | Edmonton |
| Subdivision | Secord |
| City | Edmonton |
| County | ALBERTA |
| Province | AB |
| Postal Code | T5T 7R7 |

Amenities

| | |
|-----------|------------------------|
| Amenities | See Remarks |
| Parking | Double Garage Attached |

Interior

| | |
|-------------------|--|
| Interior Features | ensuite bathroom |
| Appliances | Dishwasher-Built-In, Dryer, Garage Control, Garage Opener, Microwave Hood Fan, Refrigerator, Washer, Stove-Induction |
| Heating | Forced Air-1, Natural Gas |
| Stories | 2 |
| Has Basement | Yes |
| Basement | Full, Unfinished |

Exterior

| | |
|-------------------|--------------------|
| Exterior | Wood, Vinyl |
| Exterior Features | See Remarks |
| Roof | Asphalt Shingles |
| Construction | Wood, Vinyl |
| Foundation | Concrete Perimeter |

School Information

| | |
|------------|--------------------------|
| Elementary | DAVID THOMAS KING SCHOOL |
|------------|--------------------------|

Additional Information

| | |
|-------------|----------------|
| Date Listed | June 5th, 2025 |
|-------------|----------------|

Days on Market 12

Zoning Zone 58

DATA IS DEEMED RELIABLE BUT IS NOT GUARANTEED ACCURATE BY THE REALTORS® ASSOCIATION OF EDMONTON. COPYRIGHT 2025 BY THE REALTORS® ASSOCIATION OF EDMONTON. ALL RIGHTS RESERVED. Trademarks are owned or controlled by the Canadian Real Estate Association (CREA) and identify real estate professionals who are members of CREA (REALTOR®, REALTORS®) and/or the quality of services they provide (MLS®, Multiple Listing Service®)

Listing information last updated on June 17th, 2025 at 7:17am MDT