

\$810,000 - 165 Sandalwood Crescent, Sherwood Park

MLS® #E4440513

\$810,000

5 Bedroom, 3.50 Bathroom, 2,651 sqft

Single Family on 0.00 Acres

Summerwood, Sherwood Park, AB

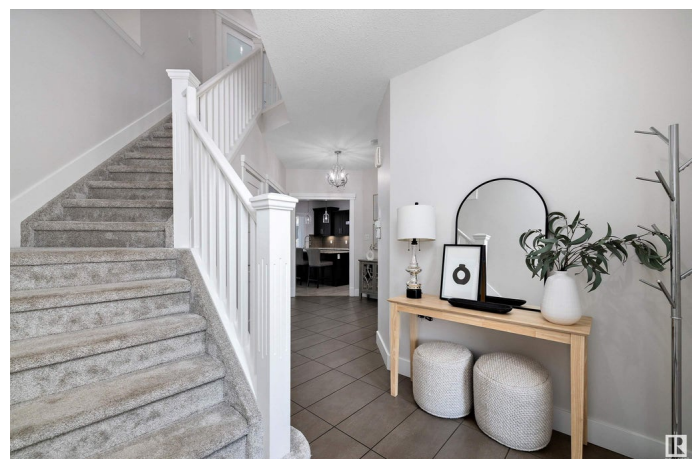
This home offers the perfect blend of style, space, and location. Don't miss the opportunity to make this timeless home yours. Located in a quiet Crescent, this Pacesetter built "Gabriel" model was one of their most popular floorplans for a reason with functionality in mind. Offering the perfect layout, beautiful COFFERED CEILINGS, NEW FLOORING, CENTRAL A/C, BUILT-IN SPEAKERS, and MASSIVE BONUS ROOM. Kitchen features BUILT-IN OVEN and MICROWAVE, GAS COOKTOP, STUNNING GRANITE COUNTERS, and LARGE ISLAND perfect for entertaining. Upstairs you will find 3 bedrooms, laundry room, bonus room, and double doors leading to your primary suite w WALK-IN CLOSET & HUGE SPA INSPIRED ENSUITE. Basement is FULLY DEVELOPED offering 2 additional bedrooms, REC ROOM with WETBAR, and LOADS OF STORAGE. Landscaping is STUNNING with STAMPED CONCRETE PATIOS and COMPOSITE DECK out back and ARTIFICIAL TURF out front. Double HEATED GARAGE w floor drain. Close to schools, shopping, and major traffic arteries.

Built in 2012

Essential Information

MLS® #

E4440513



Price	\$810,000
Bedrooms	5
Bathrooms	3.50
Full Baths	3
Half Baths	1
Square Footage	2,651
Acres	0.00
Year Built	2012
Type	Single Family
Sub-Type	Detached Single Family
Style	2 Storey
Status	Active

Community Information

Address	165 Sandalwood Crescent
Area	Sherwood Park
Subdivision	Summerwood
City	Sherwood Park
County	ALBERTA
Province	AB
Postal Code	T8H 0S4

Amenities

Amenities	Air Conditioner, Ceiling 9 ft., Closet Organizers, Hot Water Instant, No Smoking Home, Patio, Wet Bar
Parking	Double Garage Attached

Interior

Interior Features	ensuite bathroom
Appliances	Air Conditioning-Central, Dishwasher-Built-In, Dryer, Garage Control, Garage Opener, Hood Fan, Oven-Built-In, Oven-Microwave, Refrigerator, Stove-Countertop Gas, Washer
Heating	Forced Air-1, Natural Gas
Stories	3
Has Basement	Yes
Basement	Full, Finished

Exterior

Exterior	Wood, Stone, Vinyl
----------	--------------------

Exterior Features	Fenced, Flat Site, Golf Nearby, Landscaped, Low Maintenance Landscape, No Back Lane, Playground Nearby, Public Transportation, Schools, Shopping Nearby
Roof	Asphalt Shingles
Construction	Wood, Stone, Vinyl
Foundation	Concrete Perimeter

School Information

Elementary	Holy Spirit
Middle	Lakeland Ridge
High	Bev Facey

Additional Information

Date Listed	June 5th, 2025
Days on Market	10
Zoning	Zone 25

DATA IS DEEMED RELIABLE BUT IS NOT GUARANTEED ACCURATE BY THE REALTORS® ASSOCIATION OF EDMONTON. COPYRIGHT 2025 BY THE REALTORS® ASSOCIATION OF EDMONTON. ALL RIGHTS RESERVED.Trademarks are owned or controlled by the Canadian Real Estate Association (CREA) and identify real estate professionals who are members of CREA (REALTOR®, REALTORS®) and/or the quality of services they provide (MLS®, Multiple Listing Service®)

Listing information last updated on June 15th, 2025 at 7:17pm MDT