

## **\$1,099,000 - 5410 110 Street, Edmonton**

MLS® #E4440588

**\$1,099,000**

3 Bedroom, 2.50 Bathroom, 2,627 sqft

Single Family on 0.00 Acres

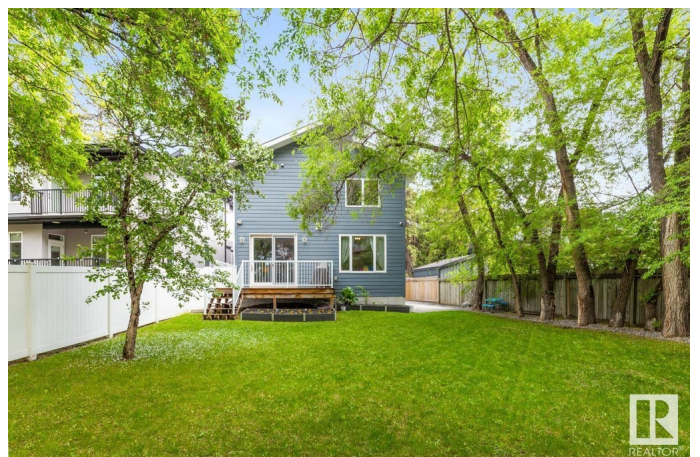
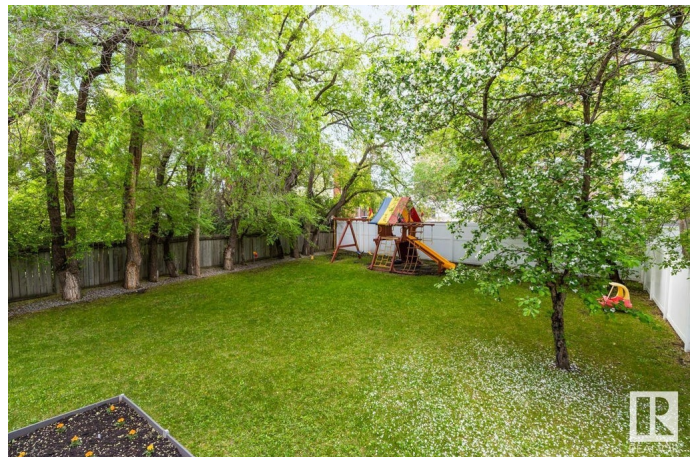
Pleasantview (Edmonton), Edmonton, AB

**THE BEST VALUE IN PLEASANTVIEW !!!**  
**INFILL with DOUBLE ATTACHED GARAGE**  
on a huge SW PIE SHAPED LOT! A great central location just minutes to U of A Hospital and downtown. The main floor offers a functional floor plan w/ a modern white kitchen, large dining space w/ custom wood slider, plus a 2 sided fireplace & spacious great room. Built-in cabinetry in the mudroom and butler's pantry offers ample storage. The main floor den is opposite a fabulous custom staircase w/ open risers and contemporary glass railings. Up to the primary bedroom with a view of large mature trees and a double entrance to the luxurious ensuite bath. Heated floors, double vanities, custom shower, plus HIS and HER walk-in closets. It's even connected to the laundry room! Two additional bedrooms complete with walk-in closets and a spacious bonus room round out the top floor. The backyard is truly an oasis featuring a composite deck, garden beds, and loads of green grass to enjoy the sunny SW exposure. Your short commute could start now!

Built in 2017

### **Essential Information**

|        |             |
|--------|-------------|
| MLS® # | E4440588    |
| Price  | \$1,099,000 |



|                |                        |
|----------------|------------------------|
| Bedrooms       | 3                      |
| Bathrooms      | 2.50                   |
| Full Baths     | 2                      |
| Half Baths     | 1                      |
| Square Footage | 2,627                  |
| Acres          | 0.00                   |
| Year Built     | 2017                   |
| Type           | Single Family          |
| Sub-Type       | Detached Single Family |
| Style          | 2 Storey               |
| Status         | Active                 |

### Community Information

|             |                         |
|-------------|-------------------------|
| Address     | 5410 110 Street         |
| Area        | Edmonton                |
| Subdivision | Pleasantview (Edmonton) |
| City        | Edmonton                |
| County      | ALBERTA                 |
| Province    | AB                      |
| Postal Code | T6H 3E1                 |

### Amenities

|           |   |
|-----------|---|
| Amenities | Air Conditioner, Deck, No Animal Home, No Smoking Home, Infill Property, Natural Gas BBQ Hookup |
| Parking   | Double Garage Attached  |

### Interior

|                   |  |
|-------------------|--|
| Interior Features | ensuite bathroom   |
| Appliances        | Air Conditioning-Central, Alarm/Security System, Dishwasher-Built-In, Dryer, Garage Control, Garage Opener, Hood Fan, Oven-Built-In, Oven-Microwave, Refrigerator, Stove-Countertop Electric, Vacuum Systems, Washer, Window Coverings, Wine/Beverage Cooler |
| Heating           | Forced Air-1, Natural Gas  |
| Fireplace         | Yes  |
| Fireplaces        | Double Sided   |
| Stories           | 2  |
| Has Basement      | Yes  |
| Basement          | Full, Unfinished   |

### Exterior

|                   |   |
|-------------------|---|
| Exterior          | Wood, Stucco, Hardie Board Siding   |
| Exterior Features | Fenced, Flat Site, Fruit Trees/Shrubs, Landscaped, No Back Lane, Playground Nearby, Public Transportation, Schools, Shopping Nearby |
| Roof              | Asphalt Shingles  |
| Construction      | Wood, Stucco, Hardie Board Siding   |
| Foundation        | Concrete Perimeter  |

### **School Information**

|            |                           |
|------------|---------------------------|
| Elementary | Lendrum Elementary School |
| Middle     | Avalon Jr High            |
| High       | Strathcona High School    |

### **Additional Information**

|                |                |
|----------------|----------------|
| Date Listed    | June 5th, 2025 |
| Days on Market | 11             |
| Zoning         | Zone 15        |

DATA IS DEEMED RELIABLE BUT IS NOT GUARANTEED ACCURATE BY THE REALTORS® ASSOCIATION OF EDMONTON. COPYRIGHT 2025 BY THE REALTORS® ASSOCIATION OF EDMONTON. ALL RIGHTS RESERVED. Trademarks are owned or controlled by the Canadian Real Estate Association (CREA) and identify real estate professionals who are members of CREA (REALTOR®, REALTORS®) and/or the quality of services they provide (MLS®, Multiple Listing Service®)

Listing information last updated on June 16th, 2025 at 6:47am MDT