

\$419,900 - 12909 205 Street, Edmonton

MLS® #E4441144

\$419,900

3 Bedroom, 2.50 Bathroom, 1,344 sqft

Single Family on 0.00 Acres

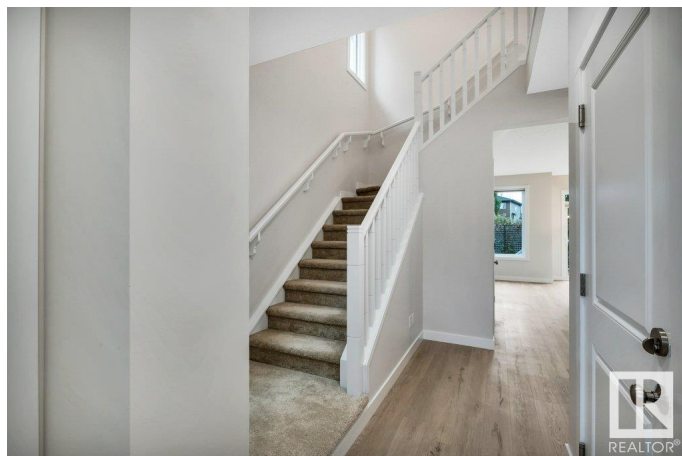
Trumpeter Area, Edmonton, AB

This stunning half duplex backing a greenspace in Trumpeter is ready for you. Offering 3 beds, 2.5 baths, unspoiled basement and single attached garage. Move in immediately and enjoy, parks, trails and a natural setting that Trumpeter offers, just minutes from both St. Albert and Edmonton. You will love the gorgeous kitchen with its quartz counters and floor to ceiling cabinetry, upper floor primary suite with its large ensuite, upstairs laundry, rear deck with no neighbors beyond to enjoy. Effectively brand new, get all the perks of a finished home with A/C, window coverings, appliances, deck, fenced yard thatâ€™s never been lived in without all the additional hassle and costs of a builder..

Built in 2012

Essential Information

MLS® #	E4441144
Price	\$419,900
Bedrooms	3
Bathrooms	2.50
Full Baths	2
Half Baths	1
Square Footage	1,344
Acres	0.00
Year Built	2012



Type	Single Family
Sub-Type	Half Duplex
Style	2 Storey
Status	Active

Community Information

Address	12909 205 Street
Area	Edmonton
Subdivision	Trumpeter Area
City	Edmonton
County	ALBERTA
Province	AB
Postal Code	T5S 0G4

Amenities

Amenities	Air Conditioner, Deck
Parking	Single Garage Attached

Interior

Interior Features	ensuite bathroom
Appliances	Air Conditioning-Central, Dryer, Garage Control, Garage Opener, Microwave Hood Fan, Refrigerator, Stove-Electric, Washer, Window Coverings
Heating	Forced Air-1, Natural Gas
Stories	2
Has Basement	Yes
Basement	Full, Unfinished

Exterior

Exterior	Wood, Brick, Vinyl
Exterior Features	Backs Onto Park/Trees, Fenced, Golf Nearby, No Back Lane
Roof	Asphalt Shingles
Construction	Wood, Brick, Vinyl
Foundation	Concrete Perimeter

Additional Information

Date Listed	June 6th, 2025
Days on Market	10
Zoning	Zone 59

DATA IS DEEMED RELIABLE BUT IS NOT GUARANTEED ACCURATE BY THE REALTORS® ASSOCIATION OF EDMONTON. COPYRIGHT 2025 BY THE REALTORS® ASSOCIATION OF EDMONTON. ALL RIGHTS RESERVED.Trademarks are owned or controlled by the Canadian Real Estate Association (CREA) and identify real estate professionals who are members of CREA (REALTOR®, REALTORS®) and/or the quality of services they provide (MLS®, Multiple Listing Service®)

Listing information last updated on June 16th, 2025 at 12:02pm MDT