

## **\$245,000 - 109 14707 53 Avenue, Edmonton**

MLS® #E4449239

**\$245,000**

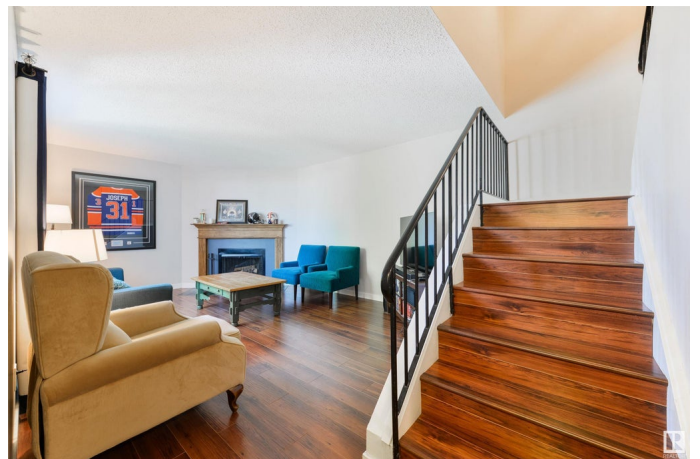
3 Bedroom, 1.50 Bathroom, 1,171 sqft  
Condo / Townhouse on 0.00 Acres

Brander Gardens, Edmonton, AB

How does a FENCED YARD & CORNER LOCATION sound? Prepare to be impressed with this FULLY UPGRADED, PET FRIENDLY, 3 BDRM in ESTABLISHED RIVERBEND! Surrounded by MATURE TREES, this unbeatable location has EASY ACCESS to the UofA, DOWNTOWN, WHITEMUD & HENDAY; with steps to TRAILS, SCHOOLS, & TRANSIT. You will notice the UPGRADED LAMINATE FLOORING that carries through the entire home. The UPDATED WHITE KITCHEN opens to the FLEXIBLE DINING that can ALSO FUNCTION AS A PRIVATE OFFICE. The living room overlooks THE LARGE FENCED YARD. LAMINATE FLOORING continues UPSTAIRS INTO THE BEDROOMS. Retreat in the PRIVATE PRIMARY with DOUBLE CLOSETS. IMPORTANT UPGRADES HAVE BEEN COMPLETED, including a NEW H/E FURNACE, NEW HWT, UPGRADED WINDOWS, & SHINGLES. BOTH BATHROOMS HAVE BEEN RENOVATED TOO! A WELL MANAGED COMMUNITY that allows you to LIVE STRESS FREE and CLOSE TO EVERYTHING, SIMPLY A WINNER!

Built in 1973

### **Essential Information**



MLS® #	E4449239
Price	\$245,000
Bedrooms	3
Bathrooms	1.50
Full Baths	1
Half Baths	1
Square Footage	1,171
Acres	0.00
Year Built	1973
Type	Condo / Townhouse
Sub-Type	Townhouse
Style	2 Storey
Status	Active

### Community Information

Address	109 14707 53 Avenue
Area	Edmonton
Subdivision	Brander Gardens
City	Edmonton
County	ALBERTA
Province	AB
Postal Code	T6H 5C9

### Amenities

Amenities	Air Conditioner, Closet Organizers, Parking-Visitor, Vinyl Windows, See Remarks
Parking	Stall

### Interior

Appliances	Dishwasher-Built-In, Dryer, Microwave Hood Fan, Refrigerator, Stove-Electric, Washer
Heating	Forced Air-1, Natural Gas
Fireplace	Yes
Fireplaces	Corner, Mantel
Stories	2
Has Basement	Yes
Basement	Full, Unfinished

### Exterior

Exterior	Wood, Vinyl
Exterior Features	Fenced, Flat Site, Golf Nearby, Landscaped, Level Land, Park/Reserve, Playground Nearby, Schools, Shopping Nearby, See Remarks
Roof	Asphalt Shingles
Construction	Wood, Vinyl
Foundation	Concrete Perimeter

### **School Information**

Elementary	Brander Gardens
Middle	Riverbend
High	Scona, L.Osborne

### **Additional Information**

Date Listed	July 23rd, 2025
Days on Market	9
Zoning	Zone 14
Condo Fee	\$406

DATA IS DEEMED RELIABLE BUT IS NOT GUARANTEED ACCURATE BY THE REALTORS® ASSOCIATION OF EDMONTON. COPYRIGHT 2025 BY THE REALTORS® ASSOCIATION OF EDMONTON. ALL RIGHTS RESERVED. Trademarks are owned or controlled by the Canadian Real Estate Association (CREA) and identify real estate professionals who are members of CREA (REALTOR®, REALTORS®) and/or the quality of services they provide (MLS®, Multiple Listing Service®)

Listing information last updated on August 1st, 2025 at 7:17pm MDT