

## \$559,900 - 75 57b Erin Ridge Drive, St. Albert

MLS® #E4453090

**\$559,900**

4 Bedroom, 3.00 Bathroom, 1,491 sqft

Condo / Townhouse on 0.00 Acres

Erin Ridge, St. Albert, AB

Absolutely gorgeous 1,491 sq ft half duplex in prestigious Edgewood Estates, a desirable 55+ complex in Erin Ridge. This stunning end unit backs onto a beautiful, private treed walkway. Featuring an open-concept layout with vaulted ceilings, abundance of big windows, and a spacious kitchen with island, quartz countertops, and ample cabinetry. The living room boasts a three-sided gas fireplace and flows into the nook/eating area plus a formal dining room. Bright nook area with doors leading to the partially covered deck. The large primary suite offers a walk-in closet and a luxurious 4-piece ensuite. A second bedroom/office, renovated 3-piece renovated bath and main floor laundry complete the level. The fully finished basement offers a huge family room with a 2nd gas fireplace, two generous bedrooms, a den, 4-piece bath, and abundant storage. Numerous renovations, A/C, and a double attached garage. Close to shopping, dining, and all amenitiesâ€™ original owner.

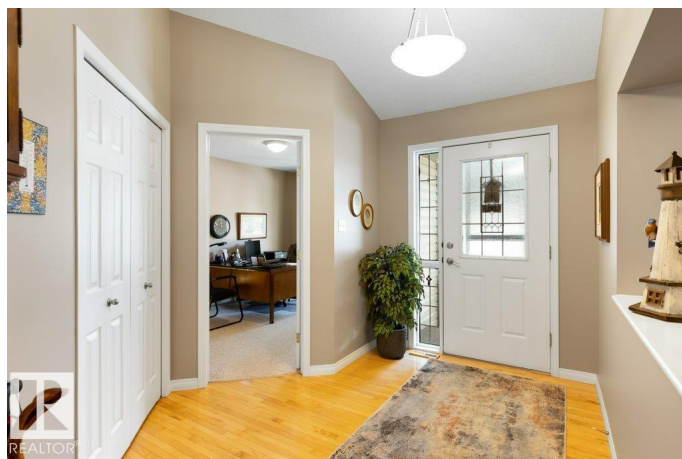
Built in 2000

### Essential Information

MLS® # E4453090

Price \$559,900

Bedrooms 4



Bathrooms	3.00
Full Baths	3
Square Footage	1,491
Acres	0.00
Year Built	2000
Type	Condo / Townhouse
Sub-Type	Half Duplex
Style	Bungalow
Status	Active

### Community Information

Address	75 57b Erin Ridge Drive
Area	St. Albert
Subdivision	Erin Ridge
City	St. Albert
County	ALBERTA
Province	AB
Postal Code	T8N 6G1

### Amenities

Amenities	Deck, Parking-Visitor, Vaulted Ceiling
Parking	Double Garage Attached, Heated, Insulated

### Interior

Interior Features	ensuite bathroom
Appliances	Air Conditioning-Central, Dishwasher-Built-In, Dryer, Garage Control, Garage Opener, Microwave Hood Fan, Refrigerator, Stove-Electric, Washer, Window Coverings, See Remarks, Garage Heater
Heating	Forced Air-1, Natural Gas
Fireplace	Yes
Fireplaces	Three Sided
Stories	2
Has Basement	Yes
Basement	Full, Finished

### Exterior

Exterior	Wood, Brick, Vinyl
Exterior Features	Golf Nearby, Landscaped, Not Fenced, Park/Reserve, Playground Nearby, Public Transportation, Shopping Nearby

Roof	Asphalt Shingles
Construction	Wood, Brick, Vinyl
Foundation	Concrete Perimeter

**Additional Information**

Date Listed	August 15th, 2025
Zoning	Zone 24
Condo Fee	\$405

DATA IS DEEMED RELIABLE BUT IS NOT GUARANTEED ACCURATE BY THE REALTORS® ASSOCIATION OF EDMONTON. COPYRIGHT 2025 BY THE REALTORS® ASSOCIATION OF EDMONTON. ALL RIGHTS RESERVED.Trademarks are owned or controlled by the Canadian Real Estate Association (CREA) and identify real estate professionals who are members of CREA (REALTOR®, REALTORS®) and/or the quality of services they provide (MLS®, Multiple Listing Service®)

Listing information last updated on August 15th, 2025 at 3:32pm MDT