

## \$528,800 - 8147 226 Street, Edmonton

MLS® #E4453254

**\$528,800**

3 Bedroom, 2.50 Bathroom, 1,876 sqft

Single Family on 0.00 Acres

Rosenthal (Edmonton), Edmonton, AB

Welcome to this 2015 Dolce Vita beauty in the community of Rosenthal! From the moment you step into the spacious, tiled front foyer, youâ€™™ll appreciate the thoughtful designâ€™™ offering access to the basement, laundry/mudroom, & insulated double attached garage. Up a couple stairs into the heart of the home is an impressive kitchen and dining area. A massive granite island takes center stage, surrounded by 2-toned cabinetry, a pantry, black appliances, and plenty of counter space. The bright living room flows effortlessly from the kitchen, with large windows that flood the space with light. Upstairs, the primary retreat awaitsâ€™™ complete with a walk-in & a spa-like 5-piece ensuite w/ a soaker tub, glass shower, and 2 sinks. Two generous bedrooms, a tech space, and a 4-pcs bath complete the upper level. The basement, with its oversized windows, is ready for your personal touch. Outside, enjoy a fully fenced yard with plenty of room to play, garden, or relax. walk to the Spray park & enjoy those long summer days.

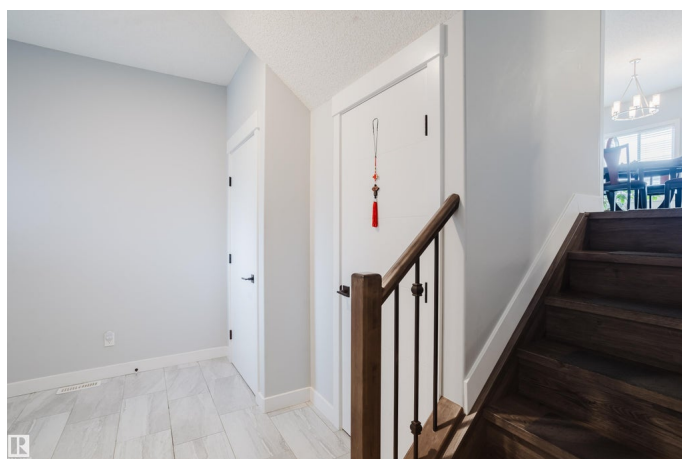
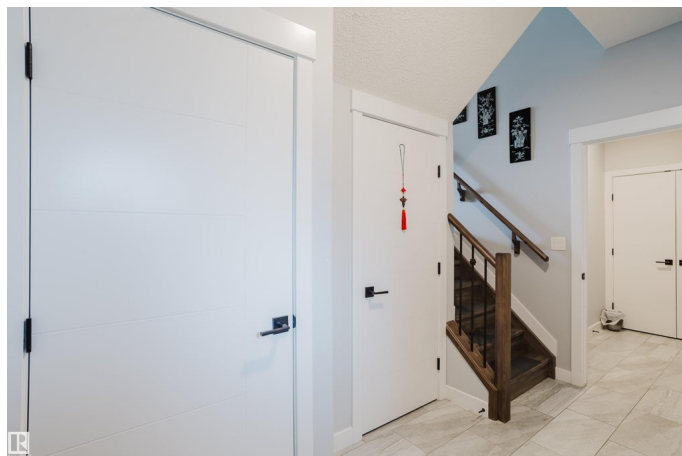
Built in 2018

### Essential Information

MLS® # E4453254

Price \$528,800

Bedrooms 3



Bathrooms	2.50
Full Baths	2
Half Baths	1
Square Footage	1,876
Acres	0.00
Year Built	2018
Type	Single Family
Sub-Type	Detached Single Family
Style	4 Level Split
Status	Active

### Community Information

Address	8147 226 Street
Area	Edmonton
Subdivision	Rosenthal (Edmonton)
City	Edmonton
County	ALBERTA
Province	AB
Postal Code	T5T 7K9

### Amenities

Amenities	Deck
Parking Spaces	4
Parking	Double Garage Attached

### Interior

Interior Features	ensuite bathroom
Appliances	Dishwasher-Built-In, Dryer, Garage Control, Garage Opener, Microwave Hood Fan, Refrigerator, Stove-Electric, See Remarks
Heating	Forced Air-1, Natural Gas
Stories	3
Has Basement	Yes
Basement	Full, Unfinished

### Exterior

Exterior	Wood, Vinyl
Exterior Features	Fenced, Landscaped, Playground Nearby, Public Transportation, Schools, Shopping Nearby
Roof	Asphalt Shingles

Construction	Wood, Vinyl
Foundation	Concrete Perimeter

**Additional Information**

Date Listed	August 15th, 2025
Days on Market	1
Zoning	Zone 58
HOA Fees	115
HOA Fees Freq.	Annually

DATA IS DEEMED RELIABLE BUT IS NOT GUARANTEED ACCURATE BY THE REALTORS® ASSOCIATION OF EDMONTON. COPYRIGHT 2025 BY THE REALTORS® ASSOCIATION OF EDMONTON. ALL RIGHTS RESERVED.Trademarks are owned or controlled by the Canadian Real Estate Association (CREA) and identify real estate professionals who are members of CREA (REALTOR®, REALTORS®) and/or the quality of services they provide (MLS®, Multiple Listing Service®)

Listing information last updated on August 16th, 2025 at 6:47am MDT