

\$380,000 - 1927 104 Street, Edmonton

MLS® #E4454566

\$380,000

1 Bedroom, 2.50 Bathroom, 1,266 sqft
Single Family on 0.00 Acres

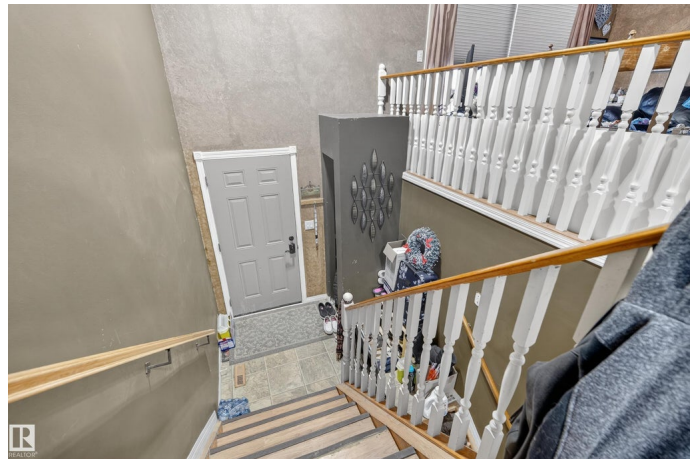
Keheewin, Edmonton, AB

Welcome to a rare investment-ready bi-level - perfectly suited for anyone seeking immediate income-generating potential OR home buyers with unique needs! Nestled in the desirable neighbourhood of Keheewin, this property features a completely renovated secondary kitchen with new appliances and a separate entrance at grade level offering living accommodations that are move-in ready. The upper level has a traditional layout and cozy feel that offers long-term tenants if the buyer wishes! The upper level has been loved for its cozy charm and steady tenancy. Whether you hope to pursue rental income now or plan to occupy the upper level, the home is a solid canvas for any buyer with a vision. The home has pex piping, a newer hot water tank, is extremely well insulated, has a new washer/dryer within 5 years - not to mention it is close to shopping centres, restaurants, public transportation and schools! Ready to capitalize on a property?

Built in 1983

Essential Information

MLS® #	E4454566
Price	\$380,000
Bedrooms	1
Bathrooms	2.50



Full Baths	2
Half Baths	1
Square Footage	1,266
Acres	0.00
Year Built	1983
Type	Single Family
Sub-Type	Half Duplex
Style	Bi-Level
Status	Active

Community Information

Address	1927 104 Street
Area	Edmonton
Subdivision	Keheewin
City	Edmonton
County	ALBERTA
Province	AB
Postal Code	T6J 5M2

Amenities

Amenities	Air Conditioner
Parking	Single Garage Attached

Interior

Interior Features	ensuite bathroom
Appliances	Air Conditioning-Central, Dryer, Hood Fan, Microwave Hood Fan, Oven-Microwave, Washer, Window Coverings, Refrigerators-Two, Dishwasher-Two, Oven Built-In-Two
Heating	Forced Air-1, Natural Gas
Fireplace	Yes
Fireplaces	Tile Surround
Stories	2
Has Suite	Yes
Has Basement	Yes
Basement	Full, Finished

Exterior

Exterior	Wood, Brick, Metal, Stucco
Exterior Features	Airport Nearby, Fenced, Landscaped, Playground Nearby, Schools,

	Shopping Nearby
Roof	Asphalt Shingles
Construction	Wood, Brick, Metal, Stucco
Foundation	Concrete Perimeter

Additional Information

Date Listed	August 25th, 2025
Days on Market	4
Zoning	Zone 16

DATA IS DEEMED RELIABLE BUT IS NOT GUARANTEED ACCURATE BY THE REALTORS® ASSOCIATION OF EDMONTON. COPYRIGHT 2025 BY THE REALTORS® ASSOCIATION OF EDMONTON. ALL RIGHTS RESERVED. Trademarks are owned or controlled by the Canadian Real Estate Association (CREA) and identify real estate professionals who are members of CREA (REALTOR®, REALTORS®) and/or the quality of services they provide (MLS®, Multiple Listing Service®)

Listing information last updated on August 29th, 2025 at 11:18am MDT