

Courtesy Of David G Parker Of Northfield Commercial

\$1,330,000 - 16940 111 Avenue, Edmonton

MLS® #E4455665

\$1,330,000

0 Bedroom, 0.00 Bathroom,
Retail on 0.00 Acres

West Sheffield Industrial, Edmonton, AB

Own prime retail in West Edmonton! High Exposure! Retail Frontage onto 170 Street! End Cap! Total of 3 Retail Units - 1 contiguous space. Multiple entrances. High Ceiling. Approval for rear overhead door. 3,423 sq ft. For Ssale - Options also available for lease. Built 1997.Units 16,17,18

Built in 1997

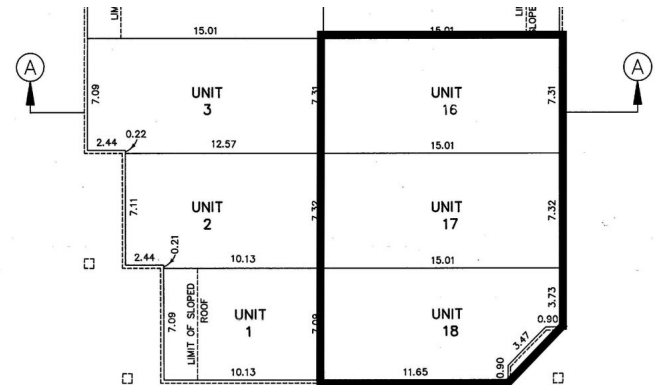
Essential Information

MLS® #	E4455665
Price	\$1,330,000
Bathrooms	0.00
Acres	0.00
Year Built	1997
Type	Retail
Status	Active

Community Information

Address	16940 111 Avenue
Area	Edmonton
Subdivision	West Sheffield Industrial
City	Edmonton
County	ALBERTA
Province	AB
Postal Code	T5X 2P1

Exterior



Exterior Brick, Wood Frame, Mixed
Construction Brick, Wood Frame, Mixed

Additional Information

Date Listed September 2nd, 2025
Days on Market 42
Zoning Zone 40

DATA IS DEEMED RELIABLE BUT IS NOT GUARANTEED ACCURATE BY THE REALTORS® ASSOCIATION OF EDMONTON. COPYRIGHT 2025 BY THE REALTORS® ASSOCIATION OF EDMONTON. ALL RIGHTS RESERVED. Trademarks are owned or controlled by the Canadian Real Estate Association (CREA) and identify real estate professionals who are members of CREA (REALTOR®, REALTORS®) and/or the quality of services they provide (MLS®, Multiple Listing Service®)

Listing information last updated on October 14th, 2025 at 1:17am MDT