

Courtesy Of Daniel E Yurdiga Of Digger Real Estate Inc.

\$575,000 - 6040 166 Avenue, Edmonton

MLS® #E4462669

\$575,000

4 Bedroom, 3.50 Bathroom, 2,310 sqft
Single Family on 0.00 Acres

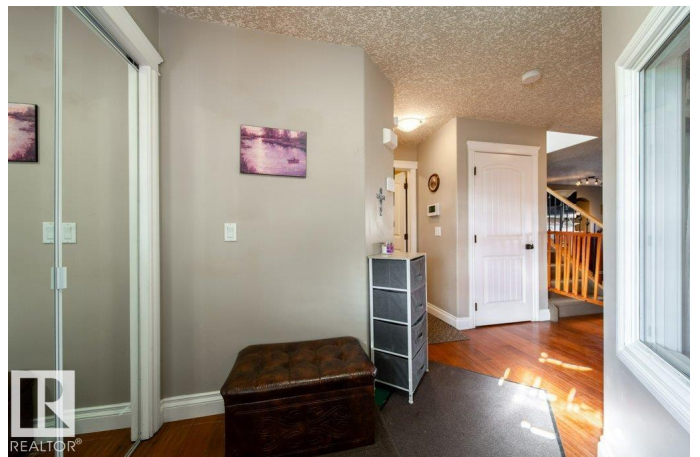
Matt Berry, Edmonton, AB

Beautiful Family Home in Matt Berry! This gorgeous 2-storey home is tucked away on a quiet cul-de-sac in the heart of Matt Berry and is perfect for any size family. From the moment you walk in, youâ€™ll love the spacious layout featuring 3 bedrooms, 3 bathrooms, a den, bonus room, and bright living area. The basement includes a 1-bedroom suite with a full kitchenâ€”ideal for extended family or guests. The oversized 20â€™x24â€™ attached garage has a larger door and backyard access, perfect for lifted trucks. Enjoy the nicely landscaped yard with a deck and treehouse swing set. All appliances included. Close to schools, shopping, and public transportation. This home truly must be seen to be appreciated!

Built in 2006

Essential Information

MLS® #	E4462669
Price	\$575,000
Bedrooms	4
Bathrooms	3.50
Full Baths	3
Half Baths	1
Square Footage	2,310
Acres	0.00



Year Built	2006
Type	Single Family
Sub-Type	Detached Single Family
Style	2 Storey
Status	Active

Community Information

Address	6040 166 Avenue
Area	Edmonton
Subdivision	Matt Berry
City	Edmonton
County	ALBERTA
Province	AB
Postal Code	T5Y 0A8

Amenities

Amenities	Air Conditioner, Deck, Detectors Smoke, Hot Water Natural Gas, Smart/Program. Thermostat, Vinyl Windows
Parking Spaces	4
Parking	Double Garage Attached

Interior

Interior Features	ensuite bathroom
Appliances	Air Conditioning-Central, Alarm/Security System, Dryer, Garage Opener, Hood Fan, Microwave Hood Fan, Stacked Washer/Dryer, Storage Shed, Washer, Window Coverings, Refrigerators-Two, Stoves-Two, Dishwasher-Two, Microwave Hood Fan-Two
Heating	Forced Air-1, Natural Gas
Fireplaces	Mantel, Tile Surround
Stories	3
Has Suite	Yes
Has Basement	Yes
Basement	Full, Finished

Exterior

Exterior	Wood, Stone, Vinyl
Exterior Features	Fenced, Landscaped, Playground Nearby, Public Swimming Pool, Public Transportation, Schools, Shopping Nearby
Roof	Asphalt Shingles
Construction	Wood, Stone, Vinyl

Foundation Concrete Perimeter

Additional Information

Date Listed October 17th, 2025

Days on Market 8

Zoning Zone 03

DATA IS DEEMED RELIABLE BUT IS NOT GUARANTEED ACCURATE BY THE REALTORS® ASSOCIATION OF EDMONTON. COPYRIGHT 2025 BY THE REALTORS® ASSOCIATION OF EDMONTON. ALL RIGHTS RESERVED. Trademarks are owned or controlled by the Canadian Real Estate Association (CREA) and identify real estate professionals who are members of CREA (REALTOR®, REALTORS®) and/or the quality of services they provide (MLS®, Multiple Listing Service®)

Listing information last updated on October 25th, 2025 at 8:17am MDT